

# CHIPS &

August 2025

The latest news and updates from  
South Puget Sound Woodturners

S  
H  
A  
V  
I  
N  
G  
S



## In This Issue

- [August President's Letter](#)
- [August Demo: Piercing - Kathleen Duncan](#)
- [Sign Up for Fair Demo / Fair Competition](#)
- [August Store](#)
- [Demonstrators Needed](#)
- [Why Do We Join Clubs?](#)
- [2025 Calendar of Events](#)
- [Help Needed at Meetings](#)
- [SPSW - Westend Woodturners](#)  
[~Come and Get Better~ Sawdust Sessions](#)
- [Ethan's Wood Prep Clinic](#)
- [Wood & Tool Swap](#)
- [2025 Membership Renewal](#)
- [Meeting Location](#)
- [SPSW Officer List](#)
- [Membership Application](#)
- [Store Product List](#)
- [Zoom Instructions](#)

Pierced Bowl by  
Kathleen Duncan



*August President's Letter By Kathy Garlick*

Holy Cow! August has come way too fast. How are you all faring this beautiful Pacific Northwest Summer? We had such a wonderful July all the way around from our guest demonstrator to the picnic and auction. We also have a full calendar for the remainder of the year, and I look forward to seeing you all at our future meetings.

First of all, let me do a quick recap of July. Our meeting was pretty much standing room only with our guest demonstrator from WOO, Brad Stave. That was an outstanding demonstration, the textured square box which was very well presented and definitely gave many of us more confidence to try something new. Thank you all who stayed to help clean up. That was fast! We do not have to put away chairs as in the past but placing the tables back in place as well as the chairs that line the back wall are often the only ones that need to be put away. There is a diagram on the back wall showing how the room is supposed to look. Also, if you haven't been putting your ticket and name in the tin, please do so.

I would like to give a big shoutout and a THANK YOU to all of you who came out to the Picnic and Auction on the Saturday following our meeting. There was a lot of yummy food, great company, new friends and lots of great wood out there to bid on. At the start of the auction we had roughly 20 lots of processed wood blanks on display for bowls or spindle work. The remaining lots were rough cut or slabbed pieces. We also had some donations of chainsaws and antique power tools for sale. In all, we had a wonderful time and thanks to everyone who bid so generously and gave us wood and monetary donations we were able to bring in about \$2,400.00! I can tell you without a doubt that is the MOST we have brought in at this event. I looked at our numbers from last year and I was off by quite a bit last month. In researching numbers, I noticed that in 2022 we made \$1,188, in 2023 we made \$2,170, in 2024 we made \$1,600. So, this year has been a great success, all thanks to your support! THANK YOU! THANK YOU! THANK YOU!

I had a few inquiries as to why we moved our Picnic and Auction over to the facility where we meet, it was a purely financial decision as well as convenience in having everything in one place. It didn't hurt that our facility rental was also cheaper than the North Lake Improvement Center. I think we will have more tents next year. They were a great addition. The feedback from members who brought wood and won wood lots from the auction all said it was nice to just drive up and unload or load, very convenient.

**Don't forget we WILL have a PRESIDENT'S CHALLENGE in August. Subject: Lidded Box, embellishments are a plus.**

**Reminder:** The ticket tin at the membership table is for those who help out each month with set up, take down, general helping as listed on the tin, bringing a President's Challenge Piece, bringing a Show-and-Tell item. Each one of these things gets you one ticket. (Just sign your name on the back and put it in the tin.) These tickets are for our Christmas Party Participation raffle. We have some wonderful items being collected throughout the year. Thank you to all of you who have volunteered to help and those who keep on pitching in. You are appreciated immensely. I look forward to seeing you all this month at our August meeting. Bring a friend and introduce them to this great group of individuals.

As Always,

Happy Turning, *Kathy*



Terry Metcalf  
Unknown



Miguel Fuentes  
Walnut

**August Demo: Kathleen Duncan**

Piercing



Kathleen will demonstrate the wing element of her interpretation of an umbrella ornament during our August 21st, meeting. She will include key elements of turning the wing form, design considerations and how she forms her piercings. This is certainly a timely topic leading into our September Mini-Symposium focused on holiday ornaments.

Kathleen is an accomplished woodturner and artist who is a proud and engaged member of the American Association of Woodturners, the Cascade Woodturners and the Southwest Washington Woodturners. She served two terms on the AAW Board of Directors (2015-2020).

Kathleen's start in woodworking truly began in early childhood watching her dad, Oscar Frey, build various wooden objects. She enjoyed watching him puzzle out how to make and build the different pieces and elements of his projects. Even at an early age she was absorbing his problem-solving methods and inventiveness as he progressed on a project. One of her most cherished pieces that he made for the family is a beautiful clock that Kathleen dubs the "Incredible



Time Machine." She also recalls a decorative spinning wheel that dad made for mom, Margaretta.

Kathleen told me, "Dad was a profoundly quiet man, he was a powerful presence in my life." They did not speak much when they were together in his shop. Kathleen recalls, "It never occurred to either one of us, that he could teach me woodworking." She suspects the 1950's ethos that separated "men's work" from "women's work" might have been at play. But, while there was no active firsthand training, the knowledge transferred, the creative passion grew and the motivation to solve problems passed through the ether to young Kathleen. She calls it, "The Sawdust Gene."

Kathleen fondly remembers her youth growing up in West Seattle two blocks from the Puget Sound. She especially enjoyed weekends visiting the family place on Lost Lake near Shelton, WA when she was about eleven through high school. Her brother and sister still maintain the family cabin. Growing up she spent much of her free time out in nature. During her outdoor adventures, the sights and ways of nature captured her imagination. The flowing patterns of water in Puget Sound, the shapes of leaves and seaweed as well as the patterns and shapes of butterfly wings all seeped into her soul filling a reserve of natural inspirations so useful to a future artist.



Cultural expectations continued to shape her life as an adult, including marriage, raising the children and supporting her now former husband's career. Kathleen quietly yearned to use her intelligence and creativity beyond these traditional roles. Though she constrained her pursuit of education for 15 years, until the children reached a certain level of independence, she doggedly pursued her education in computer science. Completing her bachelor's degree opened the opportunity of employment through WSU and enabled her to economically complete a master's degree in computer science while working.

continued on next page...



...continued from previous page

Years before moving to Vancouver, she and her friend Lillian from the local weaving group decided to make their own weaving looms. They designed and built their 8-harness jack looms. For this effort, she was finally able to put her dad's Shopsmith to good use. There were no turned elements, but since neither had



a router, the drill press mode was used to drill out a 45" slot. Once the different pieces were complete, they began assembly by laying out the frame on her kitchen floor. Conveniently, the floor tiles provided a square reference grid for the layout.



Kathleen refers to this loom as the Duncan-Young Plagiarism Loom. Weavers sometimes leverage the designs of existing looms to guide the fabrication of their own looms. On somewhat of a whim, she decided to enter the completed loom in the Whitman County Fair. Her son joined in by entering a Lego construction. They both won blue ribbons for their entries, and each received a \$2 prize.

This was the turning point, pun intended; The loom project helped Kathleen realize how much she enjoyed woodworking. After making the loom, the Shopsmith became her first lathe. In 2004, she took her job from the Pullman campus to the Vancouver campus. Though she lived close to the local WSU campus, literally in her backyard, Kathleen worked hard to keep work life separate from non-work life by pursuing woodturning.



While she did her best to draw on her absorbed knowledge and the spirit of her father to teach herself to turn, she decided to seek assistance. Kathleen was fortunate, like so many



of us 'turners' in the Pacific Northwest, she discovered a local treasure. Reaching out to a somewhat local woodturning group, the Northwest Woodturners in Portland, she found out that the Cascade Woodturning group was closer to her home. She quickly found the necessary assistance and a wonderful community of generous woodturners to boot. Kathleen has woodturning friends from around the world.

I asked Kathleen what her favorite turned piece was. Her initial reply was, "The latest thing I did is my favorite." Then she followed up with, "My first little bowl. It was green turned and not well turned. That little bowl is a gem to me." I also asked her whether she considered herself to be an artist or a craftsman. She quickly replied, "a craftsman." She added, "As a craftsman you get to try different things, different experiments." She has long considered her shop as her safe place and a place for therapy.

This will be a fun demonstration!

Always turn safe, *Ed White*

**Note:** Doug Reynolds, our hero wood rat will not be at the August meeting. Per Doug:

"My wife is making me go to Marc Adams School of Woodworking to learn how to turn wave bowls the John Beaver way so, I will not be in attendance at the August meeting. I will have wood for sale at our next mini symposium. "

Wish Doug the best and pester him to do a demo on wave bowls.

*Suzette Edwards*

### Sign Up for the Annual SPSW Puyallup Fair Demo

Here is your opportunity to do “The Puyallup” for free! Members that volunteer for shifts in our Hobby Hall woodturning demonstrations will earn a free parking pass and two free gate passes for each shift you sign up for. (That means that if you sign up for two shifts you will earn 2 free parking passes and four gate passes!)

This is your opportunity to be known as the “top turner at the fair!” I say that because, although you could choose to turn anything you want to during your demonstration, most of our demonstrators choose to turn tops because they are fast, easy to make, and we give them out to the kids. This generates a lot of interest and gives us an opportunity to meet the parents about our hobby and the advantages of joining the SPSW if they are interested.

The chart at right shows who has signed up for which shifts so far. I need to have at least two or three signed up for each shift. That way, one person can turn while the other answers questions and helps

promote the club. Anyplace you see a question mark on the sheet, we need another member to volunteer to fill that slot. I'll pass the signup sheet around at the start of the August meeting. Please help us out, and volunteer for a shift or two. See me (John Howard) at the sales table if you have any questions.

*John Howard*

| 2025 SPSW Fair Demo Dates SPSW |        |                                    |                                |
|--------------------------------|--------|------------------------------------|--------------------------------|
| Day                            | Date   | 12:00-2:30                         | 2:30-5:00                      |
| Friday                         | 29-Aug | Pat McCart / John -Howard / R. Lyn | Ramon Lyn / ?                  |
| Sunday                         | 31-Aug | Ramon Lyn / ?                      | Ramon Lyn / ?                  |
| Monday                         | 1-Sep  | R. Lyn / Jim Higgins               | R. Lyn / J. Higgins            |
| Saturday                       | 6-Sep  | Wane Wells / Dave Peters           | Jim Robson / ?                 |
| Monday                         | 8-Sep  | Al Fiedler / Doug Reynolds         | Justin Parson / D. Reynolds    |
| Friday                         | 12-Sep | Kent Horton / Jeff Marshal         | Brandi Lowrance/ W. Wells      |
| Monday                         | 15-Sep | Ramon Lyn / ?                      | ??                             |
| Saturday                       | 20-Sep | R. Lyn / J. Parson                 | P. McCart / J. Howard / R. Lyn |

### Enter your work in a Hobby Hall competition!

Just a reminder... To enter some of your woodturning in the Hobby Hall's judged competitions, you must submit an online entry form by August 16th. You can find the form and read all about the competitions at [www.thefair.com](http://www.thefair.com). Getting to the form is complex, so feel free to contact me if you need help getting into the form. (John Howard 253-370-5704).

Once the online form is complete you can drop off your work at the Hobby Hall on August 18th or 19th. It is worth the effort. Cash prizes for the Grand Champion winner and 3rd placed in each of the three classes (Spindles, Mixed Media, and Segmented Work) range from \$50 to \$200!

Show off your work and join the fun! Get started today so you will be ready to enter your work in this year's Puyallup Fair. I hope we see many of you entering.

*John Howard*

## August Store

The SPSW Store Sales Table will be open for business as usual at the August meeting. We will have all our usual abrasives, adhesives, finishes, and turning accessories. If you want to get a gallon of AnchorSeal, please call me at 253-370-5704 to make sure that I bring one for you.

Even if you're not buying anything, stop by the table to let us know how the things you bought from us work for you in your shop! And please let us know if you think of anything we should be carrying. We are always looking for products that we can offer at a discount and will help our members in their daily work.

Keep all those chips flying!

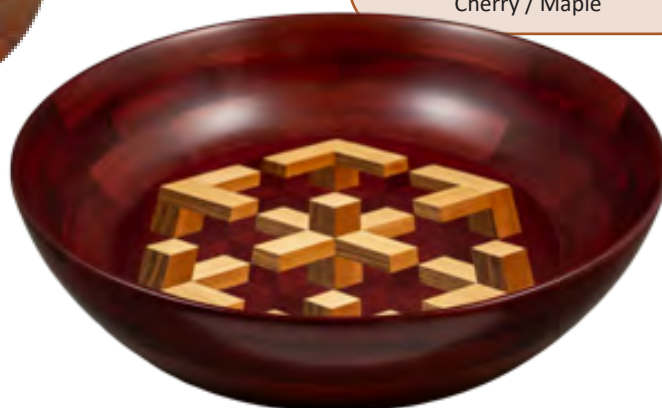
*John Howard*

**OPEN**

[See page 15 for store product list with prices.](#)



Dennis Craughan  
Wenge/Paduk/Birch



Chris Christensen  
Purple Heart / Walnut  
Cherry / Maple

## Demonstrators Needed!

Requesting Club Member Demonstrators for our September 2025 SPSW Mini-Symposium.

Looking for club members who are willing to demonstrate holiday ornament related topics.

Requested offerings include but are not limited to: Finials, inside-out turning, holiday characters, or similar.

If you are interested in supporting our September 2026 Mini-Symposium please contact Ed White - [eswhitearts84@outlook.com](mailto:eswhitearts84@outlook.com) / 206-218-3797

*Ed White*



Doug Reynolds  
"Big Gulp"  
Maple

## Why Do We Join Clubs?

This is a question that is discussed in scholarly articles available online and in text books so I'm going to skim the surface by using only my experience, observation and intuition as it relates to woodturning from a newer woodturner's perspective.

First off, here is a list, certainly not an exhaustive list, of some of the different reasons we may have for joining a club:

- To find a mentor in order to acquire or enhance our skills.
- Having grown stale in our design and technique, to seek exposure to fresh new ideas and techniques
- To (hopefully) find affordable wood and tools
- To find one's "tribe": other woodturners; others at a comparable stage in our lives; looking to integrate more quickly into a new community
- To try something completely new
- To have a recurring and productive reason to leave the house, and
- To have the opportunity to be around other people in a social setting.

For many that last one is surprisingly important. During my first visits to a woodturning club, nobody spoke to me and they seemed to look right through me. Being more introverted than not, a crowd of strangers is difficult for me. A friendly hand extended with: "Hi, you're new, right? My name is \_\_\_\_\_, welcome." Can go a long way toward helping a newcomer feel comfortable and welcome, that they fit. For those of us who recognize this tendency in ourselves, feeling welcomed and as if we're "in the right place" goes a long way toward meeting the need to be in a group of people. I suspect the number of members who fit this description is under-recognized.

An unmistakeable number of us join a turning club in order to learn and grow as crafters or artists. Some of us join in order to be of use, or to share our particular talents with others whether it be hollowing, making ornaments, embellishing, spindle work, wood processing and more. But there are also those of us looking to share organizational skills: use of audio-visual equipment, web development or leadership among others. Clubs provide a great venue in which to learn or practice any of these and other skills. Each of these talents are incredibly valuable to the health and success of any club.

And as in nearly every other endeavor, we benefit by developing networks. We learn whom to contact when help or direction is called for in tool use, machine choice, setup or maintenance. Wood processing. Marketing our output. Being in a club makes it more likely we will be think, "Oh, I know who to talk to about this" when encountering something new. A club is great for this.

continued on the next page....

## 2025 Calendar of Events

| Date      | Time | Demonstrator(s) | IRD | Subject   |
|-----------|------|-----------------|-----|---|
| Aug 21st  | 7pm  | Kathleen Duncan |     | Piercing  |
| Aug 23rd  | 9am  | Sawdust Session |     | Wayne Wells' Shop*                              |
| Sept 18th | 7pm  | Mini Symposium  |     | Focus on Spindle Turning<br>Holiday Decorations |
| Sept 20th | 9am  | Sawdust Session |     | Wayne Wells' Shop*                              |
| Oct 16th  | 7pm  | Craig Timmerman |     | Multi-Axis Weed Pot                             |
| Oct 18th  | 9am  | Sawdust Session |     | Wayne Wells' Shop*                              |

**NEED VOLUNTEERS**

\* 12012 28th Ave E, Tacoma 98445



....continued from page 6

Research shows that those with a rich social circle have longer and healthier lives.

So what have I gained from membership? I've gotten exposure to other living, breathing humans when otherwise I'd be home in my woodshop doing the same old stuff. I've made friends and acquaintances with whom to exchange talents, tools, time and materials. And being a prolific wood collector, I've gained an outlet for my excess wood as well as a pool from which to draw new wood. I've seen new and different ways to do new and different things. And in a surprising change of perspective, my membership has given Mrs. Green one of her favorite views: me going out the driveway for a few hours.

So I believe it's important to acknowledge the variety of needs met by membership in a club. Whether it's to learn woodturning for the beginner, or the "old salt" having the chance to pass some skills on to another, or the member looking for a place to be comfortably social. There's room for us all.

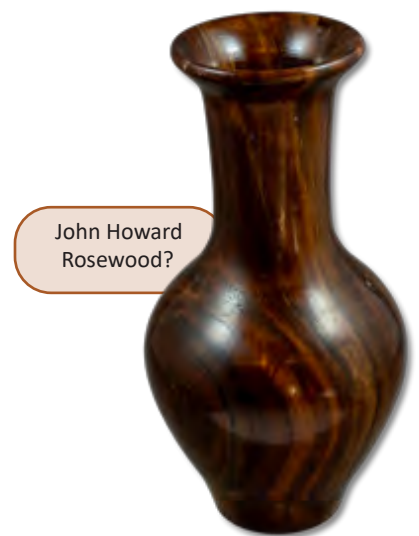
It is my hope that reading this brief piece will spark some questions and conversations as well as provide some encouragement. As in: How can we do better at attracting new and different members. Having attracted new visitors, how can we do better at encouraging them to return and remain. How can we maintain the interest and participation of long-term, more seasoned, members. What can I do to be a better ambassador for my club. How can I make a new visitor feel welcome?

"Is this your first visit? Nice to see you, my name is Ethan."

*Ethan Green*



Brian Finch  
Maple?



John Howard  
Rosewood?

### **A few additional items of business/volunteer opportunities: (Many Hands make light work)**

- We would like to have a few more volunteers to be able to fill in when needed for the Club Store & Membership table so it isn't too much for John and Chuck when Terry Broberg is traveling for work. If you are familiar with how the Square card reader works is a bonus for us all!
- We could use a couple of extra hands with our AV/Zoom with Ramon Lyn. Set up and take down takes a lot of time for one person causing us to start a little late each month and getting out of the building after our meetings. Ramon is happy to train you on set up and take down to store our cameras and equipment. Having an extra boom operator when Ken Huff is not available is helpful.
- At the meetings, we could use a hand with our show and tell, getting items in front of the cameras and also making sure that during our demonstrations that a microphone is available to audience members for questions so all can hear, even those at home.



**SPSW - Westend Woodturners**  
**~ Come Get Better ~ Sawdust Sessions**

New to woodturning? Want to improve your turning? Stuck with a current turning project?

Come join us at The Chuck Stop! (shop)

**Host:** Chuck Burke

**Location:** 15511 Bandix Rd. SE Olalla, WA 98359.

**When:** First Saturday of the month from 1PM to 4PM. (Note our next meeting will be held on Saturday Sept 6th, 2025, from 1PM to 4PM at The Chuck Stop.)

Chuck Burke, Ethan Green & Ed White

Contact Ed White – [eswhitearts84@outlook.com](mailto:eswhitearts84@outlook.com) to join the SPSW Westend mailing list



Jim Robson  
Poplar



Bob Sievers  
Oak



JoAnn Amberg  
Maple

**In Memory of Kenneth Light**

It is with great sadness that we announce the passing of long time member of SPSW Ken Light. He and his wife Polly ran our store for considerable time until he needed to step back from the duties.

Ken Light passed away peacefully August 8 in the evening. The previous Saturday his heart stopped multiple times, but they were able to get it restarted.

The reason for his ultimate passing is unknown.

Roy Lane  
Maple



### Ethan's Wood Prep Clinic

**Purpose:** This is a three-hour introductory session for members of South Puget Sound Woodturners who currently own a bandsaw. Members will learn techniques for preparing rough wood for the lathe through hands-on and demonstrated instruction.

**Sign-up:** A sign-up sheet will be available for our August and September meetings

**Activities:**

A three hour session describing the following:

- Bandsaw selection, setup, and blade selection
- Safety equipment and practices
- Considerations for a sled for crosscutting round pieces
- Discussion of various wood shapes to process
- Considerations of the wood
- Cutting for a specific shape or design.

**Ethan Green's Shop:**

2918 Sylvan Drive W.

University Place, WA. 98466

Please carpool if possible,  
parking is limited.

Participants should bring a  
piece of wood for discussion  
and possible use.



Basswood /  
Padauk

Travis Miller



Claro / Maple  
Burl



Basswood /  
Padauk





Don Norton  
Spalted Maple

Chuck Burke  
Padauk



## WOOD AND TOOL SWAP

*Sponsored by:*  
*Mid-Columbia Woodturners*

**OCTOBER 3-4, 2025**

**Location:**  
**1131 N CHERRY DR**  
**PASCO WA 99301**

**Buy, Sell, or Trade**  
**Slabs and Blanks**  
**Excess Tools**  
**Demo's, Vendors and Food**

Seeking Demonstrators  
1-2 Hour Segments for  
Simple Projects and  
Techniques

Open to the Public  
Overnight Camping \$20/night - Vendors \$20  
Credit Cards Accepted  
Open-Air Spaces  
15ft Wide, Bring Your Own Tables and Tents  
<https://midcolumbiawoodturners.org/>

RSVP: [flosayre1948@gmail.com](mailto:flosayre1948@gmail.com) Call/Text 509.539.3161

## Support the Businesses that Support SPSW

(Image is a link to the site)

Selling Premium Hardwood Lumber



10% Discount for SPSW cardholders

Woodcraft of Seattle



A Family Owned Business  
Since 1996



Expert Industrial Sharpening  
Solutions for Every Blade



5% Discount for  
SPSW cardholders

**Meeting Location and Time\*\*:**

WSU Extension in the D.F. Allmendinger Center

2607 W Pioneer Ave, Puyallup WA 98371

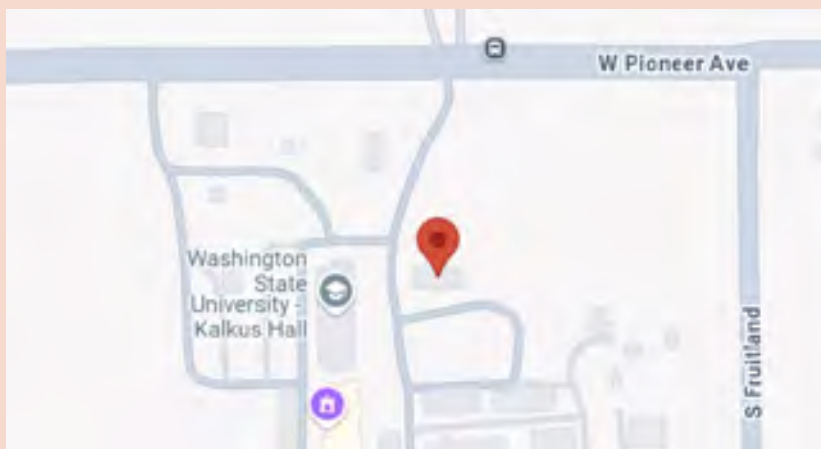
**Social Hour** 5:30 – 6:30 pm (bring your show-and-tell, President's Challenge or just mingle)

**Meeting Starts** 6:30 – 7:00 pm

(Announcements, show-and-tell, President's Challenge, etc.)

**Demonstration** 7:00 – 8:30

\*\*If you would like to help with the set up or clean up, please plan to come at 5 or stay after and help to clean up.



Looking for some inspiration?  
Check out the [SPSW YouTube Channel](#)

**2025 Membership Renewals**

If you enjoy SPSW please take the time to renew your membership.

**The dues for 2025 are only \$45 for the entire year and that is for your whole family.**

Terry Broberg, our Director of Membership, is taking dues for the 2025 year. I hope each of you will join us again for another event-filled year. I would like to encourage everyone to get your 2025 dues paid as soon as possible.

Your dues are what enable us to rent our great meeting facility, provide equipment like the new multiple camera system used to enable members to better view demonstrations in person and on-line, and purchase the tools and equipment we need to run demonstrations and sawdust sessions.

You can either pay your dues at the meeting, or an even easier method is to do it online through the members only tab on the [SPSW website](#).



| Title                          | Name            | Phone        | Email  |
|--------------------------------|-----------------|--------------|--|
| President                      | Kathy Garlick   | 253-204-9278 | <a href="mailto:president@spswoodturners.org">president@spswoodturners.org</a>   |
| Vice President / Program Chair | Ed White        | 206-218-3797 | <a href="mailto:programs@spswoodturners.org">programs@spswoodturners.org</a>   |
| Secretary                      | Mark Gilbert    |              | <a href="mailto:secretary@spswoodturners.org">secretary@spswoodturners.org</a>   |
| Treasurer                      | Pam Parson      | 253-381-7130 | <a href="mailto:treasurer@spswoodturners.org">treasurer@spswoodturners.org</a>   |
| Newsletter                     | Suzette Edwards | 253-341-7855 | <a href="mailto:newsletter@spswoodturners.org">newsletter@spswoodturners.org</a>   |
| Membership                     | Terry Broberg   | 253-606-2150 | <a href="mailto:membership@spswoodturners.org">membership@spswoodturners.org</a>   |
| Webmaster & Social Media       | Tlm Spaulding   |              | <a href="mailto:webmaster@spswoodturners.org">webmaster@spswoodturners.org</a>   |
| Store Sales                    | John Howard     | 253-370-5704 | <a href="mailto:storesales@spswoodturners.org">storesales@spswoodturners.org</a>   |
| Industry Coordinator           | Ethan Green     | 360-801-1299 | <a href="mailto:industry@spswoodturners.org">industry@spswoodturners.org</a>   |
| AV Coordinator & Zoom Tech     | Ramon Lyn       | 904-993-8106 | <a href="mailto:avcoord@spswoodturners.org">avcoord@spswoodturners.org</a><br><a href="mailto:tech@spswoodturners.org">tech@spswoodturners.org</a> |
| Wood Rat                       | Doug Reynolds   | 253-941-7985 | <a href="mailto:wood_rat@spswoodturners.org">wood_rat@spswoodturners.org</a>   |
| Mentorship                     | Michael Poirier |              | <a href="mailto:mentorship@spswoodturners.org">mentorship@spswoodturners.org</a>   |
| Director at Large: AAW Liason  | Kent Horton     | 206-909-2701 | <a href="mailto:aawdirector@spswoodturners.org">aawdirector@spswoodturners.org</a>   |
| Director at Large              | Pat McCart      | 253-337-8986 | <a href="mailto:atlarge@spswoodturners.org">atlarge@spswoodturners.org</a>   |
| Director at Large              | Jim Higgins     | 206-870-4107 | <a href="mailto:atlarge2@spswoodturners.org">atlarge2@spswoodturners.org</a>   |

### Participation Tickets



Want more chances for prizes at the December meeting?

If you participate in **Show and Tell**, **Wood Donation**, or **Set-up / Clean-Up**, make sure you fill out a participation ticket.



SPSW is a chapter of the American Association of Woodturners (AAW). Many of our members are just members of the chapter but not the American Association of Woodturners (AAW). **The AAW offers an introductory free 3-month trial membership to chapter members.** The free membership allows access to all online publications like The American Woodturner, Woodturning FUNDamentals magazine, and AAW e-newsletters.

Visit the website [www.woodturner.org](http://www.woodturner.org) (or click the link if you are an email newsletter subscriber) and look under Membership then Join Today. Scroll to the bottom of the page. The above hyperlink will also take you there. For those who prefer to do it by phone, call 877-595-9094 M-F 8:30 to 4:30 Central time.

**We are now collecting dues for 2025.** Dues for individuals or for the whole family are \$45/year. We accept cash, check, Visa®, MasterCard®, American Express®, Discover® or debit card.

This is still one of the best deals around. For just \$45 you get a monthly meeting featuring top notch presenters, an avenue to display your talents, and a forum to seek advice and ask questions. You have access to a group of mentors who can help you improve your skills.

Also, there is a monthly "open turning session" (our Sawdust Sessions) on the Saturday following the meeting. Use the membership application below and pay at the meeting or mail it to the address on membership form.

We now also have the option for you to join, renew, or just donate. We are a registered 501 (c)(3) non-profit organization. You can pay at the meeting, or on-line! Just go to our website ([www.spswoodturners.org](http://www.spswoodturners.org)), fill out the form, and pay with Square.

**AAW membership is separate from membership in the SPSW Chapter. Now is also a good time to sign up for the [American Association of Wood turners](#) (AAW). Annual memberships in the AAW operate on an yearly anniversary cycle, whereby your membership will start with your join date and continue until the same date the following year.**

If your level of AAW membership includes a printed copy of the American Woodturners journal, you will receive six issues starting with the issue published after you join or renew.

## South Puget Sound Woodturners (SPSW) Membership Application

Name: \_\_\_\_\_ Membership: ☐ New  
☐ Renewal

Address: \_\_\_\_\_

City: \_\_\_\_\_ State: \_\_\_\_\_ Zip: \_\_\_\_\_

Telephone number: \_\_\_\_\_

Email: \_\_\_\_\_

How long have you been turning? \_\_\_\_\_ AAW Member?: \_\_\_\_\_

Interest: Spindle Turning ☐ Bowls ☐ Vases ☐ Segmented turning ☐ Tool making ☐  
Tool Sharpening ☐ Pen Making ☐ Other ☐

Membership dues for South Puget Sound Woodturners are \$45.00 annually. IF paying by mail, make the check payable to South Puget Sound Woodturners (or SPSW) and mail this form to:

South Puget Sound Woodturners

PO Box 1792

Milton WA 98354

If paying on-line, [visit our website](#), fill out the on-line form and pay with PayPal

**Store Product List**

| Brand                                   | Description   | Unit Size | Price |
|---|---|-----------|-------|
| <b>Sanding</b>                          |   |           |       |
| Woodturners Wonders                     | Toughy Tapered Sanding Disc Mandrels 2"             | ea        | 7     |
|   | Tuffy Tapered Sanding Disc Mandrels 3"              | ea        | 10    |
|   | Soft Intermediate Sanding Pad 2"                    | ea        | 4     |
|   | Soft Intermediate Sanding Pad 3"                    | ea        | 5     |
|   | Green Remover Smoother (2" oversized)               | 25 Pack   | 4     |
|   | Green Wave Mylar backed Sanding Disks, 2" Oversized | 25 Pack   | 5     |
|   | Green Wave Mylar backed Sanding Disks, 3" Oversized | 25 Pack   | 7     |
|   | Wonderweave 2" disk Kit, Low Grits (60- 600 )       | 40 Discs  | 9     |
|   | Wonderweave 3" disk Kit, Low Grits (60- 600 )       | 40 Discs  | 10    |
|   | Wonderweave disk Kit 3" High Grits Grits (800-3000) | 25 Discs  | 5     |
|   | Wonderweave 3X8" 60-600 rit sheets Assortment       | Pack      | 5     |
|   | 1/3 Sheet Hook and loop Flexible Hand Sanding Pad   | ea        | 8     |
| Unedda NW                               | Sand Paper, Ekablue from Sweden 120 - 360 grit      | 2 Sheets  | 1     |
|   | EkaMant Blue Sanding Discs 2" 120 - 400 Grit        | 10 Pack   | 1     |
|   | EkaMant Blue Sanding Discs 3" 80 - 1000 Grit        | 10 Pack   | 4     |
|   | Emory Cloth Sheets 8.5X11" (120, 180, 220, 320)     | ea        | 1     |
|   | 9x11 Wet Dry Sand Paper 400 - 600 Grit              | 4 Sheets  | 3     |
| Ultra Flex                              | Micromesh Wet/Dry Sand Paper 3"x6"                  | 12 pack   | 24    |
|   | Micromesh Wet/Dry Sand Paper 3"x6"                  | 6 pack    | 13    |
| <b>Finishes and Finishing Materials</b> |   |           |       |
| GluBoost                                | Fill n Finish Kit                                   | ea        | 43    |
| Doctors Workshop                        | Walnut and Waxpaste                                 | Jar       | 10    |
|   | Walnut Finishing Oil                                | ea        | 14    |
|   | Microcrystal Wax Bowl Finish                        | Pint      | 14    |
|   | Walnut Oil and Wax Woodturning Finish               | Pint      | 14    |
|   | Walnut Oil/Carnuba Wax & Shellac Woodturning Finish | Pint      | 18    |
|   | High Build Friction Polish                          | Pint      | 18    |
|   | Pens Plus Finish                                    | Pint      | 18    |
| Doctors Woodshop                        | Cutting Board Wax                                   | 4 oz      | 12    |

continued next page

store product list continued...

| Brand                       | Description                                       | Unit Size | Price |
|-----------------------------|---|-----------|-------|
| Lathe & Turning Accessories |   |           |       |
|                             | Nomar Grinder Angle Gauge                         | ea        | 5     |
|                             | Anchor Seal 2                                     | 1 Gal     | 24    |
|                             | E-Z Lock Metal screw inserts, 10/bag              | Pkg       | 5     |
|                             | E-Z Lock Metal screw inserts, 25/bag              | Pkg       | 13    |
| Multi-Marketing Group       | Index Wheel for 3/4", 1" or 1-1/4" spindle        | ea        | 20    |
|                             | Dyna-Glide Plus dry lubricant, 13 oz. Aerosol Can | ea        | 16    |
| Adhesives                   |   |           |       |
| Starbond                    | Starbond Thin, kit                                | 2 oz      | 10    |
|                             | Starbond Instaset accelerator                     | 2 oz      | 9     |
|                             | StarBond Thin, set                                | 16 oz     | 35    |
|                             | StarBond Medium                                   | 2 oz      | 10    |
|                             | Starbond Brown Medium, kit                        | 2 oz      | 16    |
|                             | Accelerator, Pump                                 | 2 oz      | 9     |
| Bob Smith Industries        | MaxiCure, Extra Thick Gap Filling                 | 2 oz      | 9     |
|                             | Maxicure Medium, Gap Filling                      | 2 oz      | 9     |
|                             | 20 minute cure epoxy resin                        | 13 oz Kit | 12    |
| Insta-Set                   | Insta-Set Accelerator, Pump Spray                 | 2 oz      | 10    |
| Adhesive Accessories        |   |           |       |
|                             | Extender tips                                     | 3 ea      | 1     |
|                             | Extra fine glue tips                              | 3 ea      | 1     |
|                             | Tubing (2 feet)                                   | ea        | 1     |
|                             | CA Applicator, Fine                               | 3 ea      | 1     |
|                             | Glue Cap Replacement                              | ea        | 1     |
|                             | SuperSolvent                                      | 2 oz      | 7     |
|                             | Superglue Pipettes (Eye Droppers)                 | 3 ea      | 1     |





**Zoom Meeting** If you haven't been on Zoom before, just follow the steps below. **(If you have been in a Zoom meeting before, just start at step 3.)b.**

1. **The Zoom meeting invitation is only sent to active members.** So, if you have not paid your dues since October 2023, you will need to go to the members tab on the [SPSW website](https://spswoodturners.org) (spswoodturners.org) and renew your membership. Please note that it would normally cost more for just one of these demonstrations than your SPSW dues for the entire year.
2. Before the scheduled meeting, you need to go to zoom.com and download the free "Zoom Meetings" app. The Zoom download is quick, easy, and free!
3. **Information and Invitation Delivery Schedule:**
  - a. **The Wednesday the week before the meeting** – The Zoom Meeting Invitation will go out to our active member's distribution list. (This is if we get the link by then)
    - i This invitation contains a link that appears in blue letters. Just click it to join the remote demo on Thursday.
    - ii Please save this where you can find it.
      1. If you don't see the invitation(s) in your inbox, then please check your "junk" or "spam" folder. If you get our newsletters, the meeting invitation should come right into your inbox.
      2. If you did NOT get the email, the link will be posted on the SPSW website under [For Members/Zoom Meeting Link](#)
  - b. **The Saturday before the meeting.** – A reminder will be e-mailed to our active member's distribution list.
  - c. **The day of the meeting** - Log into the meeting by 6:30pm
    - i. The demo will start at 7:00pm
    - ii. When you click on the link, you will be asked if you want to join with video and audio. Answer "yes" to both, then you will enter a virtual waiting room. Wait just a few seconds and one of the co-hosts will admit you into the actual meeting.
    - iii. **Note:** If you have previously downloaded the app, you may see an update is available. If you see it, please update your app. Zoom is making frequent changes to the program to strengthen security.
    - iv. Devices used to view the demo can be smartphones, tablet computers, laptops, etc. To fully participate, the device needs to have audio and a camera.