

# CHIPS &

July 2025

The latest news and updates from  
South Puget Sound Woodturners

# SHAVING VINGS



## In This Issue

- [July President's Letter](#)
- [Help Needed](#)
- [July Demo: Creating a Square Tapered Box - Brad Stave](#)
- [A Word From Kent Horton](#)
- [2025 Calendar of Events](#)
- [Wood Sales Info](#)
- [2025 Membership Renewal](#)
- [New Member Spotlight](#)
- [July Store](#)
- [State Fair Demo Turning and Competition](#)
- [June President's Challenge Entries](#)
- [Meeting Location](#)
- [Wood & Tool Swap](#)
- [SPSW Officer List](#)
- [Membership Application](#)
- [Store Product List](#)
- [Zoom Instructions](#)



June President's Challenge  
Winner - Brandi Lowrance

*July President's Letter By Kathy Garlick*

Happy Independence to us all! Land of the free and home of the brave!

**Annual Picnic and Wood Auction**

There is a bit to cover this month and first and foremost is that we are having our Annual Picnic and Wood Auction! I look forward to seeing many of you there.

As a reminder, this is a family event and all families are welcome. We will have a potluck picnic, water and drinks will be provided. **All that we ask is that each family bring a dish to share. Assignments for those with the last names ending in A-I: Salad; J-P: Dessert; Q-Z: Main Dish.**

Lunch will be served in the Allmendinger Center Building where we have our regular meetings and the Auction will take place in the upper grassy area. You will see tents set up and wood displayed. The auction will begin around noon. If you have wood that you are bringing, please do so any time after 9 am. Gates open at 9. The grassy area is straight ahead and on the left, just past where we turn to go to the parking area. Please park in our regular parking area. If you are dropping wood for the auction, please do not stay parked in the upper area as we are not allowed to be there for an extended period of time. However, drop off and pick up of wood lots before and after are acceptable.

**Budget and Finances of SPSW**

There was a bit of discussion at our June meeting about our budget and finances. For those of you not in attendance, I would like to take a moment to give a brief overview of how we use our funding and why we have wood sales and an auction. Pam Parson, our Treasurer has been working hard to get our budget in an easily understood format as finances and budgets can sometimes seem like a burden. We as a Board of Directors want our group to be sustainable into the future for many years and are working hard to make sure that financial prudence and accountability are a part of our best practices moving forward.

Our \$45.00 membership dues, help to pay for our facility rental, insurance, zoom, website fees, advertising, Post Office box, Trailer fees and maintenance, tax filing, financial software and other administration costs which all total is more than our membership dues bring in annually. Thankfully, we are no longer in the Fife Center which cost us over \$1,000.00 more annually, however our insurance went up \$227.00.

The wood sales and Annual Wood Auction subsidizes the remainder of our costs throughout the year. Last year we brought in about \$2,800.00 in sales and auction which really helped to supplement our membership shortage moneys. But we really could use a little more in sales to feel comfortable moving forward and we appreciate your supporting the SPSW when you purchase your wood through us. The money we get through wood sales and the auction help to fund the following: Demonstrator fees, Holiday Party gifts, holiday party and picnic paper goods and drinks, mentoring consumables, bandsaw blades and lathe maintenance.

I am sure I am missing a few line items, but you get the gist. Come on out and bid on some wood at the auction and bring some yummy food to share. WE REALLY do love having you all out and appreciate all of the support you give to the club.

I have not mentioned our club store because it is currently self sustaining. John does a wonderful job with making sure that we keep current on products and that we are able to offer them to you at an affordable price without breaking either of our banks.

...continued on the next page

continued from previous page

As always, we do welcome donations to the club if you are willing and/or able to do so. But we just want to be transparent in our finances with you as well and want you all to feel welcome.

**Reminder:** The ticket tin at the membership table is for those who help out each month with set up, take down, general helping as listed on the tin, bringing a President's Challenge Piece, bringing a Show-and-Tell item. Each one of these things gets you one ticket. (Just sign your name on the back and put it in the tin.) These tickets are for our Christmas Party Participation raffle. We have some wonderful items being collected throughout the year.

Thank you to all of you who have volunteered to help and those who keep on pitching in. You are appreciated immensely. I look forward to seeing you all this month at our July meeting. Bring a friend and introduce them to this great group of individuals.

As Always,

Happy Turning, *Kathy*



Pat McCart  
Maple



Suzette Edwards  
Maple, Silver & Beads



Travis Miller  
Purple Heart & Epoxy

### A few additional items of business/volunteer opportunities: (Many Hands make light work)

- We would like to have a few more volunteers to be able to fill in when needed for the Club Store & Membership table so it isn't too much for John and Chuck when Terry Broberg is traveling for work. If you are familiar with how the Square card reader works is a bonus for us all!
- We could use a couple of extra hands with our AV/Zoom with Ramon Lyn. Set up and take down takes a lot of time for one person causing us to start a little late each month and getting out of the building after our meetings. Ramon is happy to train you on set up and take down to store our cameras and equipment. Having an extra boom operator when Ken Huff is not available is helpful.
- At the meetings, we could use a hand with our show and tell, getting items in front of the cameras and also making sure that during our demonstrations that a microphone is available to audience members for questions so all can hear, even those at home.

## July Demo: Brad Stave

Creating a Square Tapered Box



I am excited to announce our July demonstration topic is Embellished Square Boxes. Our demonstrator will be Brad Stave. Brad is a well prepared, long time woodturner residing in the Pacific Northwest. He is currently a member of the [Woodturners of Olympia](#) and previously was a member of the [Olympic Peninsula Woodturners](#), sometimes referred to as the Bremerton club. He even served as their president.



Brad loves learning about woodturning and typically attends one to two woodworking or woodturning courses each year. Over the years he has enjoyed learning from the best including David Ellsworth, John Jordan as well as Graeme Priddle and his wife Melissa Engler.



My interview with Brad was certainly enjoyable, I love getting to know each of our demonstrators, but my efforts were eased somewhat by Brad's self-written biography.

Enjoy! *Ed White*

### Biography of a Woodturner

Those who know Brad Stave will tell you that Brad has always worked with wood in some form or another. And those who don't know Brad, but meet him, soon experience the intense love he has for wood. If names are omens in a person's life, then Brad Stave's name was sure to destine him to a life of woodworking.

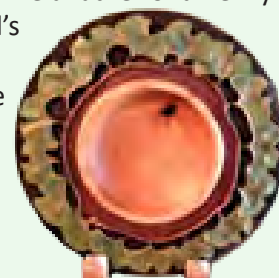
Brad began working with wood at the age of 5 when he received his first toolbox. "There hasn't been a time that I can remember, where wood has not been a significant part of my life," recalls Brad.



After graduating from college, Brad remained true to his heart. He realized that working with wood was not enough. He wanted to share his love for wood through teaching; and it has rewarded him with many enriching experiences. Brad taught Graphic Arts in Mukilteo, WA and then moved to Wyoming, where he taught woodworking to Arapaho and Shoshone Native American Children (grades 3-8).

Then in 1985, Brad moved to California. There he started a new job and became a father of a newly born daughter. Sensing her husband's need to find some avenue to work with wood, Brad's wife Silvia bought him a wood lathe. And from that point on, Brad knew he had found his niche. Brad says, "Of all the creative endeavors I have pursued, wood turning has been the most rewarding, it is the pursuit of my heart."

By 2006 Brad was ready to get back home to the Pacific Northwest, so Olympia is now home; let the chips fly!



...continued on the next page

...continued from previous page

### Creating a Square Tapered Box

At this month's club meeting, I will deliver a detailed and comprehensive presentation on creating a small square tapered box using a wood lathe. It is important to note that not all steps in this project will be performed on the lathe; I will begin by explaining the off-lathe steps, followed by an in-depth focus on carving and painting the box. The demonstration will include the use of a lathe, a rotary carving tool with various bits, and techniques for wood burning to add texture. After carving and burning, I will illustrate the application of both acrylic paints and milk paint.

*Brad Stave*



**Don Norton**  
Purple Heart

### A Word From Kent Horton

Hello again, this is Kent Horton, your AAW/SPSW liaison encouraging you to join the [AAW \(American Association of Woodturners\)](https://www.aaw-woodturners.org/). Once again my mantra, "If you are serious about becoming a better woodturner, you owe it to yourself to join AAW and take advantage of the resources available related to the craft of woodturning."

It is my hope that many of you signed up for the virtual symposium demonstrations that AAW has provided to members who were not able to attend their big annual event in person in St. Paul this year. So far, I have been able to watch 5 of the 20 demonstrations that are available and have not been disappointed. My primary focus with my own turning lately has been developing better tool control. Jim Echter's presentation, "Spindling to Better Bowls" was excellent. In it he used a handful of plastic drinking straws to illustrate the importance of tool edge presentation to the wood necessary to support the wood fibers and get precise clean cuts and avoid catches and tearout. Getting my own bundle of straws is hot on my list. Phill Sikes walked through the process he uses to turn green wood with a very clear explanation of tool positioning to get the form and surface you are aiming for. Again, an excellent demonstration. Emma Cook's Cupcake Boxes and Jim Sannerund's "Surface Embellishment" presentations illustrate clearly the connection between turning and carving using traditional woodcarving tools and - importantly - how to sharpen these tools.

As a follow-up from my last article, I did get the colored pencils I had talked about and attempted to use them to highlight the rims on those little plates with a narrow pinstripe. The problem I had was that after sanding the back and remounting them face-out in my jumbo jaws, there was just enough difference between the front and back that I had created a slight "wobble" that kept the pinstripe from being crisp and clean. The colored pencils worked great however. Note to self: Do all the cutting and surface embellishments on the face of the plate or platter BEFORE working on the back side. Time to get back to the shop.

Yours in turning,

*Kent Horton,*  
Director-at-Large  
AAW Liaison  
206.909.2701

[aawdirector@spswoodturners.org](mailto:aawdirector@spswoodturners.org)

**Wood Sales**

Our wood rat Doug Reynolds will have various species of turning blanks available for sale at the General Membership Meeting. Species that we do not normally have for sale.

**Ethan Green**  
Madrone



**Brandi Lowrance**  
Horse Chestnut



**Travis Miller**  
Myrtle, Padauk & Epoxy



## *2025 Calendar of Events*

Date	Time	Demonstrator(s)	IRD	Subject
July 17th	7pm	Brad Stave		Tapered Square Bowl
July 19th	9am	Wood auction		Wood auction and pot luck
Aug 21st	7pm	Kathleen Duncan		Piercing
Aug 23rd	9am	Sawdust Session		Wayne Wells' Shop*
Sept 18th	7pm	Mini Symposium		Focus on Spindle Turning Holiday Decorations
Sept 20th	9am	Sawdust Session		Wayne Wells' Shop*

**NEED VOLUNTEERS**

\* 12012 28th Ave E, Tacoma 98445

## New Member Spotlight



Meet Chris Christensen, a new member of the SPSW club. He is also a member of the Segmented Woodturners chapter of the AAW. Chris and his wife Jeanette live in the home he built in Lake Tapps. Their home is beautifully decorated with about 40 museum quality segmented bowls (a few of them are pictured here)

Chris was a machinist. Boeing brought him out to WA from Utah and after two years he got laid off. Exotic Metals called him to work and eventually he worked his way up in the company to the point where they made him an engineer. He retired from Exotic Metals when he was 56 and set up his own business out of his garage.

He retired again 13 years ago at age 70 and that is when he got into segmented woodturning. It happened because of a bowl he received at his surprise

70th birthday party. He still has that bowl. While wintering in Sun City, Arizona he was introduced to segmented turning. The only turning Chris does is segmented, both open and closed.

He has sold two bowls but has mostly given them away. He gave one to the person who helped with his landscaping. He is still actively creating new segmented bowls and enjoys sharing his passion with anyone who is interested.

Now it's your turn,

*Al Fiedler*

**Chris Christensen**  
Cherry, Holly & Grandillo

**Al Fieldler**  
Walnut, Cherry & Maple

**John Paul**  
Cherry



## July Store

The store sales table will be open for business as usual at the July meeting. We will have all our usual assortments of abrasives, adhesives, finishes, turning accessories, and AnchorSeal.

If you want to get a gallon of AnchorSeal, please call me at 253-370-5704 to make sure that I bring one for you.

Even if you're not buying anything, stop by the table to let us know how the things you bought from us work for you in your shop! And please let us know if you think of anything we should be carrying. We are always looking for products that we can offer at a discount and will help our members in their daily work.

Keep all those chips flying!

*John Howard*

**OPEN**

[See page 15 for store product list with prices.](#)



Holly

John Howard



Monkey Puzzle



Monkey Puzzle



Douglas Fir



Maple

Jim Robson



[Table of Contents](#)

## Update on The "Umteenth" Annual State Fair Woodturning Demo



I have been working with Fair Staff and Finn Posner, the person coordinating fair demos for the Woodturners of Olympia to finalize the schedule for our annual demonstration of woodturning in the Hobby Hall. I think we are now there.

The table below shows the dates and times we will be doing demonstrations on Stage C of the Hobby Hall.

We have quite a few members that look forward to doing this each year. There will be multiple opportunities to reserve your spot. If you would like to be a part of this, I will bring the sign-up sheet to the July meeting, the Wood Auction, and will also take volunteers by phone anytime. If there is a certain person you would like to work with, let me know and I will try to get you scheduled that way.

Pat and I will be set up to demonstrate turning tops which is a project that many demonstrators choose to do. I will talk more next month about other projects that demonstrators have done in the past.

*John Howard*

2025 SPSW Fair Demo Dates SPSW			
Day	Date	12:00-2:30	2:30-5:00
Friday	29-Aug	McCart/Howard	
Sunday	31-Aug		
Monday	1-Sep		
Saturday	6-Sep		
Monday	8-Sep		
Friday	12-Sep		
Monday	15-Sep		
Saturday	20-Sep		McCart/Howard

**SIGN UP!**

## Enter your work in a Hobby Hall competition!

Just a reminder... To enter some of your woodturning in the Hobby Hall's judged competitions, you must submit an online entry form by August 16th. You can find the form and read all about the competitions at [www.thefair.com](http://www.thefair.com). Getting to the form is complex, so feel free to contact me if you need help getting into the form. (John Howard 253-370-5704).

Once the online form is complete you can drop off your work at the Hobby Hall on August 18th or 19th. It is worth the effort. Cash prizes for the Grand Champion winner and 3rd placed in each of the three classes (Spindles, Mixed Media, and Segmented Work) range from \$50 to \$200!

Show off your work and join the fun! Get started today so you will be ready to enter your work in this year's Puyallup Fair. I hope we see many of you entering.

*John Howard*

Division 351: Woodturning				
Ribbon		Class 1102 Spindles	Class 1103 Mixed Media	Class 1104 Segmented
Blue	1st Place	\$125	\$125	\$125
Red	2nd Place	\$75	\$75	\$75
Yellow	3rd Place	\$50	\$50	\$50

### June President's Challenge Enties - Jewelry



Koa



Koa



Brandi Lowrance

Redwood Burl

Ethan Green  
Purpleheart

Bamboo

Ipe &amp; Silver



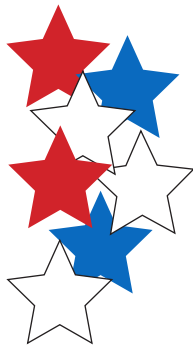
Frank Huebner



Lilac



Cherry &amp; Copper

Ken Huff  
Cherry & Resin

### Winners of the Annual Kitsap Carvers Artistry in Wood Show

Left to right:

1st place and Best in Division, hollow form with void in old growth Douglas fir burl harvested in 1949.

2nd place, hollow form in pheasant wood purchased from Steve Bartocci, the Boardholder.

3rd place, hollow form from a madrona burl bowl blank.

*Ethan Green*



## Support the Businesses that Support SPSW

(Image is a link to the site)

## Selling Premium Hardwood Lumber



10% Discount for SPSW cardholders

## Woodcraft of Seattle

A Family Owned Business  
Since 1996Expert Industrial Sharpening  
Solutions for Every Blade5% Discount for  
SPSW cardholders

Ed White

Oregon White Oak

Dave Peters  
Monkey Puzzle

## WOOD AND TOOL SWAP

*Sponsored by:*  
*Mid-Columbia Woodturners***OCTOBER 3-4, 2025****Location:****1131 N CHERRY DR  
PASCO WA 99301****Buy, Sell, or Trade****Slabs and Blanks****Excess Tools****Demo's, Vendors and Food**Seeking Demonstrators  
1-2 Hour Segments for  
Simple Projects and  
Techniques

Open to the Public  
Overnight Camping \$20/night - Vendors \$20  
Credit Cards Accepted  
Open-Air Spaces  
15ft Wide, Bring Your Own Tables and Tents  
<https://midcolumbiawoodturners.org/>

RSVP: [flosayre1948@gmail.com](mailto:flosayre1948@gmail.com) Call/Text 509.539.3161

**Meeting Location and Time\*\*:**

WSU Extension in the D.F. Allmendinger Center

2607 W Pioneer Ave, Puyallup WA 98371

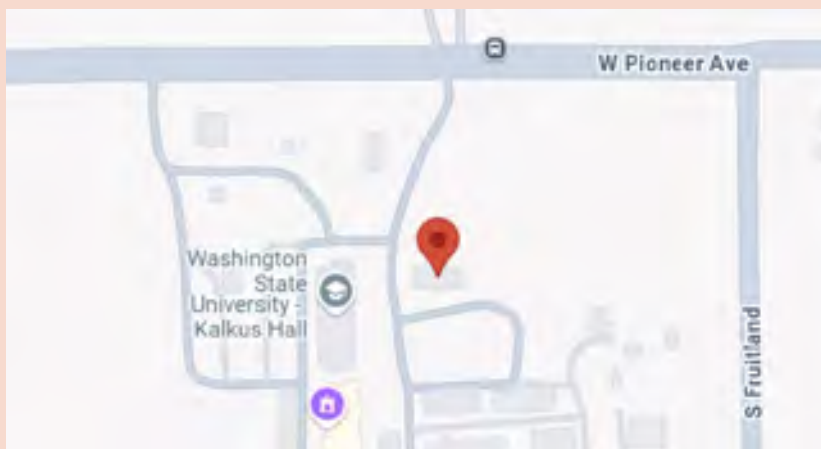
**Social Hour** 5:30 – 6:30 pm (bring your show-and-tell, President's Challenge or just mingle)

**Meeting Starts** 6:30 – 7:00 pm

(Announcements, show-and-tell, President's Challenge, etc.)

**Demonstration** 7:00 – 8:30

\*\*If you would like to help with the set up or clean up, please plan to come at 5 or stay after and help to clean up.



Looking for some inspiration?

Check out the [SPSW YouTube Channel](#)

**2025 Membership Renewals**

If you enjoy SPSW please take the time to renew your membership.

**The dues for 2025 are only \$45 for the entire year and that is for your whole family.**

Terry Broberg, our Director of Membership, is taking dues for the 2025 year. I hope each of you will join us again for another event-filled year. I would like to encourage everyone to get your 2025 dues paid as soon as possible.

Your dues are what enable us to rent our great meeting facility, provide equipment like the new multiple camera system used to enable members to better view demonstrations in person and on-line, and purchase the tools and equipment we need to run demonstrations and sawdust sessions.

You can either pay your dues at the meeting, or an even easier method is to do it online through the members only tab on the [SPSW website](#).

Title	Name	Phone	Email
President	Kathy Garlick	253-204-9278	<a href="mailto:president@spswoodturners.org">president@spswoodturners.org</a>
Vice President / Program Chair	Ed White	206-218-3797	<a href="mailto:programs@spswoodturners.org">programs@spswoodturners.org</a>
Secretary	Mark Gilbert		<a href="mailto:secretary@spswoodturners.org">secretary@spswoodturners.org</a>
Treasurer	Pam Parson	253-381-7130	<a href="mailto:treasurer@spswoodturners.org">treasurer@spswoodturners.org</a>
Newsletter	Suzette Edwards	253-341-7855	<a href="mailto:newsletter@spswoodturners.org">newsletter@spswoodturners.org</a>
Membership	Terry Broberg	253-606-2150	<a href="mailto:membership@spswoodturners.org">membership@spswoodturners.org</a>
Webmaster & Social Media	Tlm Spaulding		<a href="mailto:webmaster@spswoodturners.org">webmaster@spswoodturners.org</a>
Store Sales	John Howard	253-370-5704	<a href="mailto:storesales@spswoodturners.org">storesales@spswoodturners.org</a>
Industry Coordinator	Ethan Green	360-801-1299	<a href="mailto:industry@spswoodturners.org">industry@spswoodturners.org</a>
AV Coordinator & Zoom Tech	Ramon Lyn	904-993-8106	<a href="mailto:avcoord@spswoodturners.org">avcoord@spswoodturners.org</a> <a href="mailto:tech@spswoodturners.org">tech@spswoodturners.org</a>
Wood Rat	Doug Reynolds	253-941-7985	<a href="mailto:wood_rat@spswoodturners.org">wood_rat@spswoodturners.org</a>
Mentorship	Michael Poirier		<a href="mailto:mentorship@spswoodturners.org">mentorship@spswoodturners.org</a>
Director at Large: AAW Liason	Kent Horton	206-909-2701	<a href="mailto:aawdirector@spswoodturners.org">aawdirector@spswoodturners.org</a>
Director at Large	Pat McCart	253-337-8986	<a href="mailto:atlarge@spswoodturners.org">atlarge@spswoodturners.org</a>
Director at Large	Jim Higgins	206-870-4107	<a href="mailto:atlarge2@spswoodturners.org">atlarge2@spswoodturners.org</a>

### Participation Tickets



Want more chances for prizes at the December meeting?

If you participate in **Show and Tell**, **Wood Donation**, or **Set-up / Clean-Up**, make sure you fill out a participation ticket.



SPSW is a chapter of the American Association of Woodturners (AAW). Many of our members are just members of the chapter but not the American Association of Woodturners (AAW). **The AAW offers an introductory free 3-month trial membership to chapter members.** The free membership allows access to all online publications like The American Woodturner, Woodturning FUNDamentals magazine, and AAW e-newsletters.

Visit the website [www.woodturner.org](http://www.woodturner.org) (or click the link if you are an email newsletter subscriber) and look under Membership then Join Today. Scroll to the bottom of the page. The above hyperlink will also take you there. For those who prefer to do it by phone, call 877-595-9094 M-F 8:30 to 4:30 Central time.

**We are now collecting dues for 2025.** Dues for individuals or for the whole family are \$45/year. We accept cash, check, Visa®, MasterCard®, American Express®, Discover® or debit card.

This is still one of the best deals around. For just \$45 you get a monthly meeting featuring top notch presenters, an avenue to display your talents, and a forum to seek advice and ask questions. You have access to a group of mentors who can help you improve your skills.

Also, there is a monthly "open turning session" (our Sawdust Sessions) on the Saturday following the meeting. Use the membership application below and pay at the meeting or mail it to the address on membership form.

We now also have the option for you to join, renew, or just donate. We are a registered 501 (c)(3) non-profit organization. You can pay at the meeting, or on-line! Just go to our website ([www.spswoodturners.org](http://www.spswoodturners.org)), fill out the form, and pay with Square.

**AAW membership is separate from membership in the SPSW Chapter. Now is also a good time to sign up for the [American Association of Wood turners](#) (AAW). Annual memberships in the AAW operate on an yearly anniversary cycle, whereby your membership will start with your join date and continue until the same date the following year.**

If your level of AAW membership includes a printed copy of the American Woodturners journal, you will receive six issues starting with the issue published after you join or renew.

## South Puget Sound Woodturners (SPSW) Membership Application

Name: \_\_\_\_\_ Membership: ☐ New  
☐ Renewal

Address: \_\_\_\_\_

City: \_\_\_\_\_ State: \_\_\_\_\_ Zip: \_\_\_\_\_

Telephone number: \_\_\_\_\_

Email: \_\_\_\_\_

How long have you been turning? \_\_\_\_\_ AAW Member?: \_\_\_\_\_

Interest: Spindle Turning ☐ Bowls ☐ Vases ☐ Segmented turning ☐ Tool making ☐  
Tool Sharpening ☐ Pen Making ☐ Other ☐

Membership dues for South Puget Sound Woodturners are \$45.00 annually. IF paying by mail, make the check payable to South Puget Sound Woodturners (or SPSW) and mail this form to:

South Puget Sound Woodturners

PO Box 1792

Milton WA 98354

If paying on-line, [visit our website](#), fill out the on-line form and pay with PayPal

**Store Product List**

Brand	Description	Unit Size	Price
<b>Sanding</b>			
Woodturners Wonders	Toughy Tapered Sanding Disc Mandrels 2"	ea	7
	Tuffy Tapered Sanding Disc Mandrels 3"	ea	10
	Soft Intermediate Sanding Pad 2"	ea	4
	Soft Intermediate Sanding Pad 3"	ea	5
	Green Remover Smoother (2" oversized)	25 Pack	4
	Green Wave Mylar backed Sanding Disks, 2" Oversized	25 Pack	5
	Green Wave Mylar backed Sanding Disks, 3" Oversized	25 Pack	7
	Wonderweave 2" disk Kit, Low Grits (60- 600 )	40 Discs	9
	Wonderweave 3" disk Kit, Low Grits (60- 600 )	40 Discs	10
	Wonderweave disk Kit 3" High Grits Grits (800-3000)	25 Discs	5
	Wonderweave 3X8" 60-600 rit sheets Assortment	Pack	5
	1/3 Sheet Hook and loop Flexible Hand Sanding Pad	ea	8
Unedda NW	Sand Paper, Ekablue from Sweden 120 - 360 grit	2 Sheets	1
	EkaMant Blue Sanding Discs 2" 120 - 400 Grit	10 Pack	1
	EkaMant Blue Sanding Discs 3" 80 - 1000 Grit	10 Pack	4
	Emory Cloth Sheets 8.5X11" (120, 180, 220, 320)	ea	1
	9x11 Wet Dry Sand Paper 400 - 600 Grit	4 Sheets	3
Ultra Flex	Micromesh Wet/Dry Sand Paper 3"x6"	12 pack	24
	Micromesh Wet/Dry Sand Paper 3"x6"	6 pack	13
<b>Finishes and Finishing Materials</b>			
GluBoost	Fill n Finish Kit	ea	43
Doctors Workshop	Walnut and Waxpaste	Jar	10
	Walnut Finishing Oil	ea	14
	Microcrystal Wax Bowl Finish	Pint	14
	Walnut Oil and Wax Woodturning Finish	Pint	14
	Walnut Oil/Carnuba Wax & Shellac Woodturning Finish	Pint	18
	High Build Friction Polish	Pint	18
	Pens Plus Finish	Pint	18
Doctors Woodshop	Cutting Board Wax	4 oz	12

continued next page

store product list continued...

Brand	Description	Unit Size	Price
Lathe & Turning Accessories			
	Nomar Grinder Angle Gauge	ea	5
	Anchor Seal 2	1 Gal	24
	E-Z Lock Metal screw inserts, 10/bag	Pkg	5
	E-Z Lock Metal screw inserts, 25/bag	Pkg	13
Multi-Marketing Group	Index Wheel for 3/4", 1" or 1-1/4" spindle	ea	20
	Dyna-Glide Plus dry lubricant, 13 oz. Aerosol Can	ea	16
Adhesives			
Starbond	Starbond Thin, kit	2 oz	10
	Starbond Instaset accelerator	2 oz	9
	StarBond Thin, set	16 oz	35
	StarBond Medium	2 oz	10
	Starbond Brown Medium, kit	2 oz	16
	Accelerator, Pump	2 oz	9
Bob Smith Industries	MaxiCure, Extra Thick Gap Filling	2 oz	9
	Maxicure Medium, Gap Filling	2 oz	9
	20 minute cure epoxy resin	13 oz Kit	12
Insta-Set	Insta-Set Accelerator, Pump Spray	2 oz	10
Adhesive Accessories			
	Extender tips	3 ea	1
	Extra fine glue tips	3 ea	1
	Tubing (2 feet)	ea	1
	CA Applicator, Fine	3 ea	1
	Glue Cap Replacement	ea	1
	SuperSolvent	2 oz	7
	Superglue Pipettes (Eye Droppers)	3 ea	1



**Zoom Meeting** If you haven't been on Zoom before, just follow the steps below. **(If you have been in a Zoom meeting before, just start at step 3.)b.**

1. **The Zoom meeting invitation is only sent to active members.** So, if you have not paid your dues since October 2023, you will need to go to the members tab on the [SPSW website](https://spswoodturners.org) (spswoodturners.org) and renew your membership. Please note that it would normally cost more for just one of these demonstrations than your SPSW dues for the entire year.
2. Before the scheduled meeting, you need to go to zoom.com and download the free "Zoom Meetings" app. The Zoom download is quick, easy, and free!
3. **Information and Invitation Delivery Schedule:**
  - a. **The Wednesday the week before the meeting** – The Zoom Meeting Invitation will go out to our active member's distribution list. (This is if we get the link by then)
    - i This invitation contains a link that appears in blue letters. Just click it to join the remote demo on Thursday.
    - ii Please save this where you can find it.
      1. If you don't see the invitation(s) in your inbox, then please check your "junk" or "spam" folder. If you get our newsletters, the meeting invitation should come right into your inbox.
      2. If you did NOT get the email, the link will be posted on the SPSW website under [For Members/Zoom Meeting Link](#)
  - b. **The Saturday before the meeting.** – A reminder will be e-mailed to our active member's distribution list.
  - c. **The day of the meeting** - Log into the meeting by 6:30pm
    - i. The demo will start at 7:00pm
    - ii. When you click on the link, you will be asked if you want to join with video and audio. Answer "yes" to both, then you will enter a virtual waiting room. Wait just a few seconds and one of the co-hosts will admit you into the actual meeting.
    - iii. **Note:** If you have previously downloaded the app, you may see an update is available. If you see it, please update your app. Zoom is making frequent changes to the program to strengthen security.
    - iv. Devices used to view the demo can be smartphones, tablet computers, laptops, etc. To fully participate, the device needs to have audio and a camera.