

CHIPS &

May 2025

S
H
A
V
I
N
G
S

The latest news and updates from
South Puget Sound Woodturners



In This Issue

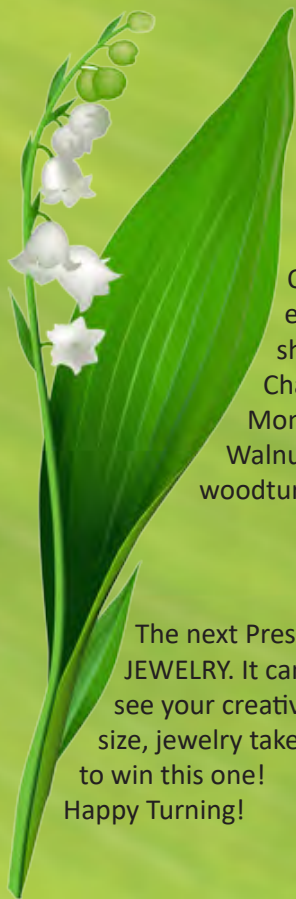
- [May President's Letter](#)
- [May Demo: Olla Forms](#)
- Kevin Jesequel
- [A Word From Kent Horton](#)
- [May Store](#)
- [2025 Calendar of Events](#)
- [April President's Challenge Entries](#)
- [Meeting Location](#)
- [2025 Membership Renewal](#)
- [Wood & Tool Swap](#)
- [SPSW Officer List](#)
- [Membership Application](#)
- [Zoom Instructions](#)

April President's
Challenge Winner

Wayne Wells
Monkey Puzzle



May President's Letter By Kathy Garlick



Happy May to you! The flowers and trees are all in bloom, the busy bees and pollinators are venturing out gathering precious life giving nectar from our foliage blooms. It is such a peaceful and beautiful sight to see life springing anew and the attitude that these beautiful spring days bring that makes me feel that God does see us and the renewal of life is His way in bringing us hope and peace in the days ahead, that not only hope, but LIFE Springs Eternal, so treasure each moment.

Our April meeting brought David Best showing us his "Best Techniques". I hope you enjoyed it as much as I. Allowing the natural beauty of the wood to speak to you in the shape, texture and finish really makes your piece go from nice to WOW! The President's Challenge for April 'The Hollow Form' was won by Wayne Wells and his beautiful Spalted Monkey Puzzle hollow form with seven large and two small knots near the top and a Black Walnut top finial and bottom plug. Seven knots are rare find for Monkey Puzzle enthusiasts in woodturning.

President's Challenge

The next President's Challenge will be in June and the subject is JEWELRY. It can be pendants, rings earrings, bracelets. I would love to see your creativity and types of jewelry you like to make. Being small in size, jewelry takes a gentle touch and a lot of precise cuts. Detail is the key to win this one!

Happy Turning!

Kathy



Chris Bizak
Maple

Wayne Wells
Ash



Jim Robson
Maple



May Demo: Olla Forms - Kevin Jesequel

South Puget Sound Woodturners are excited to host Kevin Jesequel as our May demonstrator. He will be demonstrating his approach to creating "Fingertip" Opening Hollow Forms.

Kevin Jesequel is a woodturner living in Beaverton, Oregon. Taking an interest in hollow forms after the passing of his mother in 2020, he has quickly become recognized as one of the top hollow form artists today. His work has been published several times in *American Woodturner* and he has been a juried and invited artist to numerous exhibitions. He was selected by the American Association of Woodturners' POP Committee to receive the 2024 Artist Showcase at their annual symposium and enjoys demonstrating and teaching at clubs across the country. He is an active member of two local woodturning clubs Cascade Woodturners and Northwest Woodturners. Kevin served as president of Cascade Woodturners' Association in 2024.



Kevin draws on the crafting spirit of his mother and celebrates her memory in the name of his studio For Lou Studio. Read more on Kevin's story, *For Lou*.

Hollow Form with a "Fingertip" Opening



Do you have a desire to create hollow forms on the lathe? Are you already making them, but struggling with any part of the process? Do you want to give freehand hollowing a try? I will show you my process for creating hollow forms with clean lines and small openings. Through a combination of hands-on turning and discussion, this demonstration will include everything from selecting the wood to mounting it on the lathe and shaping the form to hollowing and finishing. I will

also cover tool selection and use, ergonomics and body mechanics. Hollow forms do not need to be complicated or require expensive tooling to create. (*Kevin Jesequel*)



Hollow Form Workshop



SPSW has also arranged for Kevin to return on Friday the 16th for an encore performance with an all-day workshop for the seven SPSW club members who have signed up and paid for this experience. Each club member will be guided through two hollow form projects.

I would very much like to express my appreciation to all the club members who are supporting this workshop through the loan of the lathes, transport of lathes, and supply and preparation of two project blanks for each of the attending club members! Thank you:



Lathes: Dave P., Kathy G., Ethan G., Jeff M., & Brandi L.;

Wood blanks: Devin G. & Ethan G. Host accommodations: Dave B. and Workshop assistance: Brandi L.

Always turn safe!

Ed White

A Word From Kent Horton

Hello again, this is Kent Horton your SPSW/AAW liaison with yet another edition. Again, my mantra

– “If you are serious about improving your woodturning skills, you owe it to yourself to join AAW and take advantage of their many resources dedicated to the craft/art of woodturning.”

Again this year, the AAW is offering a discount to those who would like to participate in their annual International Symposium but are unable to attend in person. This can be accomplished by [registering](#) and attending virtually. A 20% discount is available to SPSW members who are also members of the AAW. All you need to do is include the code: virtual25group when you register. I need at least 4 additional SPSW members to join me in applying for this discount. (AAW requires at least 5 club members to sign up in order to receive this discount. I have listed below some information regarding this opportunity to participate virtually as published by AAW.

Advantages of Watching Virtually from Home:

- Watch 20 high definition recordings of woodturning demonstrations from renowned international woodturners live or later at your own pace.
- With access to the recordings until September 24, you can watch them as many times as you want and really hone in your skills.
- Pay less in travel, food and registration fees.
- The dress code is about as relaxed as it could get.
- Participate in the live woodturned art auctions online.
- You will always get the best seat in the demo rooms.
- Take snack or bathroom breaks whenever you want.
- This is the best way to get a preview of the AAW Symposium to know if you want to attend in-person next year.

You can save up to 34% on the price if you register by May 31.

When I talked with the very nice person at AAW, she informed me that next years' (2026) International Symposium will be held in Raleigh, North Carolina, and a decision has not yet been made for 2027. I put in a strong vote for the 2027 one to be held in the Seattle/Tacoma area of the Pacific Northwest, apparently they are on a 3-year location cycle (East coast, Central US, and West Coast). Anyhow, I was very pleased with the quality of the virtual presentations I watched from the 2023 symposium. I encourage all SPSW members to give some serious consideration to registering and viewing the virtual presentations.

Yours in turning,

Kent Horton,
Director-at-Large
AAW Liaison
206.909.2701

aawdirector@spswoodturners.org



May Store

New super Glue product introduced: I have ordered a stock of StarBond medium-viscosity Brown. CA glue is a medium-viscosity, multi-purpose, instant adhesive. It has properties similar to StarBond's thin CA and thick CA products. Our new StarBond medium brown CA glue is ideal for filling small gaps in the wood, penetrating narrow slots, fitting parts, and creating high-gloss finishes on wood. This CA wood finishing is accompanied by applying multiple coats, sanding, and then polishing to a high shine.

I bought a kit at the last meeting, and used it for the first time this week. I was doing a bowl and a small void appeared. I just placed a bit of medium brown CA in it and gave it a spritz of accelerator. The glue set instantly and I was able to cut it back with the lathe tools and sand it like it was wood.

We now have StarBond's Thin, Medium, and Medium brown CA glues and accelerator in two-ounce bottles. Each kit of CA glue contains 2 ounces of glue, a clog prevention cap, and extra applicator nozzle, 8 micro-applicator tips and a user's guide. It sets instantly with a spritz of StarBond accelerator, which we also carry; or it will set in about 20 seconds without activator.

As usual, please stop by the sales table to let us know how the items we sell work for you. Also, if you want us to bring AnchorSeal for you, please give me a call at 253-370-5704 to ensure we bring it to the meeting for you! See you at the next meeting. Until then, keep those chips flying!

John Howard

| Brand | Description | Unit Size | Price |
|-----------------------------|-----------------------------------|-----------|-------|
| Adhesives | | | |
| Starbond | Starbond Thin, kit | 2 oz | 10 |
| | StarBond Thin, set | 16 oz | 35 |
| | StarBond Medium, kit | 2 oz | 10 |
| | StarBond Mediumn Brown, kit | 2 oz | 10 |
| | Starbond Instaset accelerator | 2 oz | 4 |
| | Accelerator, Pump | 2 oz | 9 |
| Bob Smith Industries | MaxiCure, Extra Thick Gap Filling | 2 oz | 9 |
| | Maxicure Medium, Gap Filling | 2 oz | 9 |
| | 20 minute cure epoxy resin | 13 oz Kit | 12 |
| Insta-Set | Insta-Set Accelerator, Pump Spray | 2 oz | 10 |
| Adhesive Accessories | | | |
| | Extender tips | 3 ea | 1 |
| | Extra fine glue tips | 3 ea | 1 |
| | Tubing (2 feet) | | 1 |
| | CA Applicator, Fine | 3 ea | 1 |
| | Glue Cap Replacement | ea | 1 |
| | SuperSolvent | 2 oz | 7 |
| | Superglue Pipettes (Eye Droppers) | 3 ea | 1 |

| Brand | Description | Unit Size | Price |
|---|---|-----------|-------|
| Sanding | | | |
| Woodturners Wonders | Toughy Tapered Sanding Disc Mandrels 2" | ea | 7 |
| | Tuffy Tapered Sanding Disc Mandrels 3" | | 10 |
| | Soft Intermediate Sanding Pad 2" | ea | 4 |
| | Soft Intermediate Sanding Pad 3" | ea | 5 |
| | Green Wave Mylar backed Sanding Disks, 3" Oversized | 25 Pack | 7 |
| | Wonderweave 2" disk Kit, Low Grits (60- 600) | 40 Discs | 9 |
| | Wonderweave 3" disk Kit, Low Grits (60- 600) | 40 Discs | 14 |
| | Wonderweave disk Kit 3" High Grits Grits (800-3000) | 25 Discs | 12 |
| | Wonderweave 3X8" 60-600 rit sheets Assortment | Pack | 5 |
| | 1/3 Sheet Hook and loop Flexible Hand Sanding Pad | | 8 |
| | Sand Paper, Ekablue from Sweden 120 - 360 grit | 2 Sheets | 1 |
| Uneeda NW | EkaMant Blue Sanding Discs 2" 120 - 400 Grit | 10 Pack | 3 1 |
| | EkaMant Blue Sanding Discs 3" 80 - 1000 Grit | 10 Pack | 4 |
| | Emory Cloth Sheets 8.5X11" (120, 180, 220, 320) | ea | 1 |
| | 9x11 Wet Dry Sand Paper 400 - 600 Grit | 4 Sheets | 3 |
| Ultra Flex | Micromesh Wet/Dry Sand Paper | 2 Pack | 24 |
| Finishes and Finishing Materials | | | |
| GluBoost | Fill n Finish Kit | | 43 |
| Doctors Workshop | Walnut and Waxed Kit | Jar | 10 |
| | Walnut Finishing Oil | | 14 |
| | Microcrystal Wax Bowl Finish | Pint | 14 |
| | Walnut Oil and Wax Woodturning Finish | Pint | 14 |
| | Walnut Oil/Carnuba Wax & Shellac Woodturning Finish | Pint | 18 |
| | High Build Friction Polish | Pint | 18 |
| | Pens Plus Finish | Pint | 18 |
| Doctors Woodshop | Cutting Board Wax | 4 oz | 12 |
| Lathe and Turning Accessories | | | |
| | Lyn Grinder Angle Gauge | ea | 5 |
| | Anchor Seal 2 | 1 Gal | 24 |
| | E-Z Lock Metal screw inserts, 10/bag | Pkg | 5 |
| | E-Z Lock Metal screw inserts, 25/bag | Pkg | 13 |
| Multi-Marketing Group | Index Wheel for 3/4", 1" or 1-1/4" spindle | | 20 |
| | Dyna-Glide Plus dry lubricant, 13 oz. Aerosol Can | ea | 15 |



Monday Night Mentoring at Mike Poirier's Shop

Greg Lease
Maple

Ethan Green
Maple



Greg Lease
Black Cherry



Don Norton
Unknown



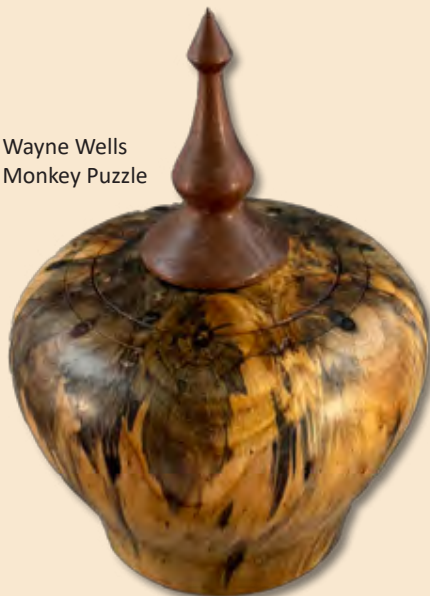
2025 Calendar of Events

| Date | Time | Demonstrator(s) | IRD | Subject |
|-----------|------|-----------------|-----|---------------------------|
| May 15th | 7pm | Olla Forms | | Kevin Jesequel |
| May 17th | 9am | Sawdust Session | | Wayne Wells' Shop* |
| June 19th | 7pm | TBD | | |
| June 21st | 9am | Sawdust Session | | Wayne Wells' Shop* |
| July 17th | 7pm | TBD | | |
| July 19th | 9am | Wood auction | | Wood auction and pot luck |

* 12012 28th Ave E, Tacoma 98445

[Table of Contents](#)

April President's Challenge Entries

Wayne Wells
Monkey PuzzleDon Norton
AcaciaTravis Miller
MyrtleJohn Howard
Big Leaf MapleEthan Green
Madrona Burl

Meeting Location and Time**:

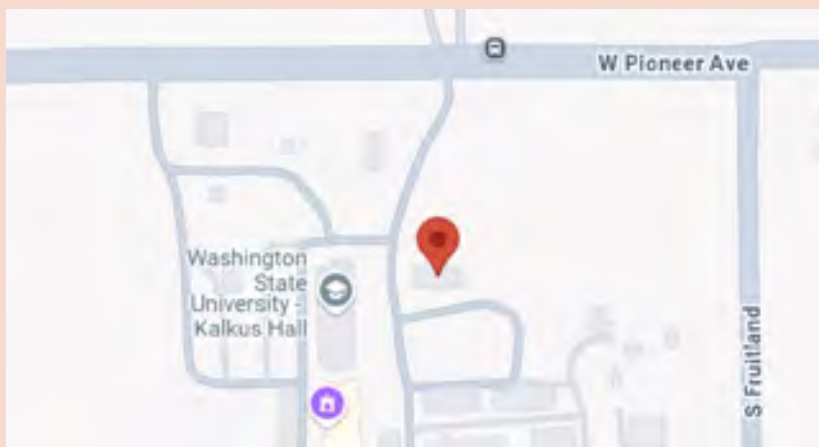
WSU Extension in the D.F. Allmendinger Center
2607 W Pioneer Ave, Puyallup WA 98371

Social Hour 5:30 – 6:30 pm (bring your show-and-tell, President's Challenge or just mingle)

Meeting Starts 6:30 – 7:00 pm
(Announcements, show-and-tell, President's Challenge, etc.)

Demonstration 7:00 – 8:30

**If you would like to help with the set up or clean up, please plan to come at 5 or stay after and help to clean up.



2025 Membership Renewals



If you enjoy SPSW please take the time to renew your membership.

The dues for 2025 are only \$45 for the entire year and that is for your whole family.

Terry Broberg, our Director of Membership, is taking dues for the 2025 year. I hope each of you will join us again for another event-filled year. I would like to encourage everyone to get your 2025 dues paid as soon as possible.

Your dues are what enable us to rent our great meeting facility, provide equipment like the new multiple camera system used to enable members to better view demonstrations in person and on-line, and purchase the tools and equipment we need to run demonstrations and sawdust sessions.

You can either pay your dues at the meeting, or an even easier method is to do it online through the members only tab on the [SPSW website](#).

Steve Miner
Walnut



Looking for some inspiration?
Check out the [SPSW YouTube Channel](#)

WOOD AND TOOL SWAP

Sponsored by:
Mid-Columbia Woodturners

OCTOBER 3-4, 2025

Location:

**1131 N CHERRY DR
PASCO WA 99301**

Buy, Sell, or Trade

Slabs and Blanks

Excess Tools

Demo's, Vendors and Food

Seeking Demonstrators
1-2 Hour Segments for
Simple Projects and
Techniques

Open to the Public
Overnight Camping \$20/night - Vendors \$20
Credit Cards Accepted
Open-Air Spaces
15ft Wide, Bring Your Own Tables and Tents
<https://midcolumbiawoodturners.org/>

RSVP: flosayre1948@gmail.com Call/Text 509.539.3161

Travis Miller
Myrtle



| Title | Name | Phone | Email |
|--------------------------------|-----------------|--------------|--|
| President | Kathy Garlick | 253-204-9278 | president@spswoodturners.org |
| Vice President / Program Chair | Ed White | 206-218-3797 | programs@spswoodturners.org |
| Secretary | Mark Gilbert | | secretary@spswoodturners.org |
| Treasurer | Pam Parson | 253-381-7130 | treasurer@spswoodturners.org |
| Newsletter | Suzette Edwards | 253-341-7855 | newsletter@spswoodturners.org |
| Membership | Terry Broberg | 253-606-2150 | membership@spswoodturners.org |
| Webmaster & Social Media | Tlm Spaulding | | webmaster@spswoodturners.org |
| Store Sales | John Howard | 253-370-5704 | storesales@spswoodturners.org |
| Industry Coordinator | Ethan Green | 360-801-1299 | industry@spswoodturners.org |
| AV Coordinator & Zoom Tech | Ramon Lyn | 904-993-8106 | avcoord@spswoodturners.org tech@spswoodturners.org |
| Wood Rat | Doug Reynolds | 253-941-7985 | wood_rat@spswoodturners.org |
| Mentorship | Michael Poirier | | mentorship@spswoodturners.org |
| Director at Large: AAW Liason | Kent Horton | 206-909-2701 | aawdirector@spswoodturners.org |
| Director at Large | Pat McCart | 253-337-8986 | atlarge@spswoodturners.org |
| Director at Large | Jim Higgins | 206-870-4107 | atlarge2@spswoodturners.org |

Participation Tickets



Want more chances for prizes at the December meeting?

If you participate in **Show and Tell**, **Wood Donation**, or **Set-up / Clean-Up**, make sure you fill out a participation ticket.



SPSW is a chapter of the American Association of Woodturners (AAW). Many of our members are just members of the chapter but not the American Association of Woodturners (AAW). **The AAW offers an introductory free 3-month trial membership to chapter members.** The free membership allows access to all online publications like The American Woodturner, Woodturning FUNDamentals magazine, and AAW e-newsletters.

Visit the website www.woodturner.org (or click the link if you are an email newsletter subscriber) and look under Membership then Join Today. Scroll to the bottom of the page. The above hyperlink will also take you there. For those who prefer to do it by phone, call 877-595-9094 M-F 8:30 to 4:30 Central time.

We are now collecting dues for 2025. Dues for individuals or for the whole family are \$45/year. We accept cash, check, Visa®, MasterCard®, American Express®, Discover® or debit card.

This is still one of the best deals around. For just \$45 you get a monthly meeting featuring top notch presenters, an avenue to display your talents, and a forum to seek advice and ask questions. You have access to a group of mentors who can help you improve your skills.

Also, there is a monthly "open turning session" (our Sawdust Sessions) on the Saturday following the meeting. Use the membership application below and pay at the meeting or mail it to the address on membership form.

We now also have the option for you to join, renew, or just donate. We are a registered 501 (c)(3) non-profit organization. You can pay at the meeting, or on-line! Just go to our website (www.spswoodturners.org), fill out the form, and pay with PayPal.

AAW membership is separate from membership in the SPSW Chapter. Now is also a good time to sign up for the [American Association of Wood turners](#) (AAW). Annual memberships in the AAW operate on an yearly anniversary cycle, whereby your membership will start with your join date and continue until the same date the following year.

If your level of AAW membership includes a printed copy of the American Woodturners journal, you will receive six issues starting with the issue published after you join or renew.

South Puget Sound Woodturners (SPSW) Membership Application

Name: _____ Membership: ☐ New
☐ Renewal

Address: _____

City: _____ State: _____ Zip: _____

Telephone number: _____

Email: _____

How long have you been turning? _____ AAW Member?: _____

Interest: Spindle Turning ☐ Bowls ☐ Vases ☐ Segmented turning ☐ Tool making ☐
Tool Sharpening ☐ Pen Making ☐ Other ☐

Membership dues for South Puget Sound Woodturners are \$45.00 annually. IF paying by mail, make the check payable to South Puget Sound Woodturners (or SPSW) and mail this form to:

South Puget Sound Woodturners

PO Box 1792

Milton WA 98354

If paying on-line, [visit our website](#), fill out the on-line form and pay with PayPal



Zoom Meeting If you haven't been on Zoom before, just follow the steps below. **(If you have been in a Zoom meeting before, just start at step 3.)b.**

1. **The Zoom meeting invitation is only sent to active members.** So, if you have not paid your dues since October 2023, you will need to go to the members tab on the [SPSW website](https://spswoodturners.org) (spswoodturners.org) and renew your membership. Please note that it would normally cost more for just one of these demonstrations than your SPSW dues for the entire year.
2. Before the scheduled meeting, you need to go to zoom.com and download the free "Zoom Meetings" app. The Zoom download is quick, easy, and free!
3. **Information and Invitation Delivery Schedule:**
 - a. **The Wednesday the week before the meeting** – The Zoom Meeting Invitation will go out to our active member's distribution list. (This is if we get the link by then)
 - i This invitation contains a link that appears in blue letters. Just click it to join the remote demo on Thursday.
 - ii Please save this where you can find it.
 1. If you don't see the invitation(s) in your inbox, then please check your "junk" or "spam" folder. If you get our newsletters, the meeting invitation should come right into your inbox.
 2. If you did NOT get the email, the link will be posted on the SPSW website under [For Members/Zoom Meeting Link](#)
 - b. **The Saturday before the meeting.** – A reminder will be e-mailed to our active member's distribution list.
 - c. **The day of the meeting** - Log into the meeting by 6:30pm
 - i. The demo will start at 7:00pm
 - ii. When you click on the link, you will be asked if you want to join with video and audio. Answer "yes" to both, then you will enter a virtual waiting room. Wait just a few seconds and one of the co-hosts will admit you into the actual meeting.
 - iii. **Note:** If you have previously downloaded the app, you may see an update is available. If you see it, please update your app. Zoom is making frequent changes to the program to strengthen security.
 - iv. Devices used to view the demo can be smartphones, tablet computers, laptops, etc. To fully participate, the device needs to have audio and a camera.