

CHIPS &

February 2024

S H A V I N G S

The latest news and updates from
South Puget Sound Woodturners



In This Issue

- [February President's Letter](#)
- [2024 Calendar of Events](#)
- [AAW Symposium Group Discount](#)
- [March Mini Symposium Group Engagement](#)
- [February's Demo - Terry Broberg - Epoxy Rimmed Bowl](#)
- [January President's Challenge Winner](#)
- [A Word From Kent Horton - AAW Liason](#)
- [A Note From Ramon Lyn](#)
- [Color Work at March Symposium](#)
- [February Store](#)
- [SPSW Officer List](#)
- [Zoom Instructions](#)
- [Membership Renewal](#)



February Presidents Letter *by Kathy Garlick*

Happy February to all! We have started the year off with a bang. Such a wonderful demonstration by our very own Eileen Collins in January! So informative and interesting in using fiber reactive dyes to her wood turned pieces. Her French polish technique that she shared with us will help us all to improve our finishes and try new ones, Thank you Eileen!

If that wasn't exciting enough, this month let us welcome our very own Terry Broberg as he demonstrates how to do an epoxy rimmed bowl. We have been so mesmerized by his bowls all of last year and we have been able to schedule him in for a demo. We are one lucky group to have such amazing talented people amongst us and sharing in their talents. So join us on February 15th at the Fife Community Center or you can join us via Zoom. We will start with our President's Challenge winning entrant and move into our show-and-tell immediately following. We will need to start our demonstration no later than 7:15 p.m. Remember one show-and-tell piece per person.

President's Challenge for February is adding color to your turned piece. Resin does not count for this month. Can be dyed, painted, stained or another creative form of adding color.

Note: Please remember to renew your membership today! Membership dues help pay for our meeting facilities, prizes at our annual holiday party, website domain, and of course our video/streaming capabilities.

Happy Turning!

Kathy Garlick



2024 CALENDAR OF EVENTS

Date	Time	Demonstrator(s)	IRD	Subject
Feb 15 2024	7pm	Terry Broberg		Epoxy Rimmed Bowl
Feb 17 2024	9am	Sawdust Session		Wayne Wells' Shop*
Mar 21, 2024	7pm	Mini Symposium		
Mar 23 2024	9am	Sawdust Session		Wayne Wells' Shop*
Apr 18 2024	7pm	Elizabeth Weber		Carving A Wave/Leaf Motif Bowl (As seen at the 2023 AAW Symposium)
Apr 20 2024	9am	Sawdust Session		Wayne Wells' Shop*

* 12012 28th Ave E, Tacoma 98445

Note: In house demos are broadcast on Zoom from the Fife Center. DO NOT MISS OUT! Read the ZOOM instructions on the page 9.





2024 AAW's 38th International Woodturning Symposium

May 23-26

Register by April 5 to save \$120

ALSO

SPSW GROUP DISCOUNT!

Kent registered SPSW for AAW's Portland symposium group discount. They sent him a special code for 30 slots that AAW members need to use when they register to receive this discount. Thus far he only has four names on his list. Contact Kent to get on the list. **SAVE MONEY!**

If you haven't gone to a symposium because they always seem to be so far away, here's your chance. GO!

Contact Kent. scimankent@gmail.com
206-242-4432



David Virak - Maple

Dave Peters - Yew

March Mini-Symposium Group Engagement

Tell US What You are Looking for.

- AAW and other Useful Resources
- Education Needs
- Future Demonstrations

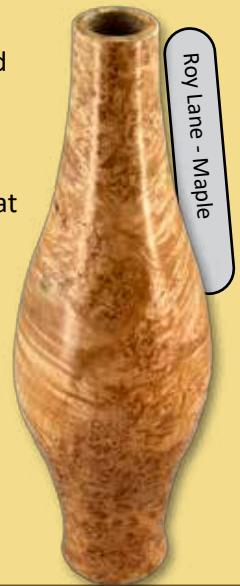
As your new Director of Programs, my goal is to align our selected demonstration topics with your woodturning interests and skill development needs. Your input and feedback are vital to achieving this goal. In March, at our Mini-Symposium will be your best opportunity to provide your input and feedback.

Please plan to stop by our Group Engagement Station at the Mini-Symposium. Kent Horton and I will be there to share Useful Resources as well as interact with group members to gather your woodturning interests and educational needs.

We will be using a multi-voting process to gather your preferences. The more club members that participate the better. Hope to see you all in March.

Please consider: Where are you on your Woodturning Journey? Where do you want to go? What skills do you want to develop further? What topics would you like to see in the future?

Always Turn Safe,
Ed White



January President's Challenge Entries



Kathy Garlick

Ethan Green Fiddleback

Devin Garlick

JoAnn Amberg

Terry Broberg - Maple

February Demo - Terry Broberg, Epoxy Rimmed Bowl

Like many woodturners, I was exposed to a lathe briefly in high school. It was fun to use the different tools and start to understand how they worked. I moved on in life and didn't start seriously turning until about 8 years ago.

My first lathe was a ShopSmith. I set it up and used a very awkward chuck to make a lighthouse. It was so fun to see the thing shape and develop as the lathe spun around. I was hooked. On a trip to Sumner Woodworking, I learned about our club. After the first meeting, I knew that I was at a place where my skills could be developed and enhanced. The Sawdust Sessions are fantastic!



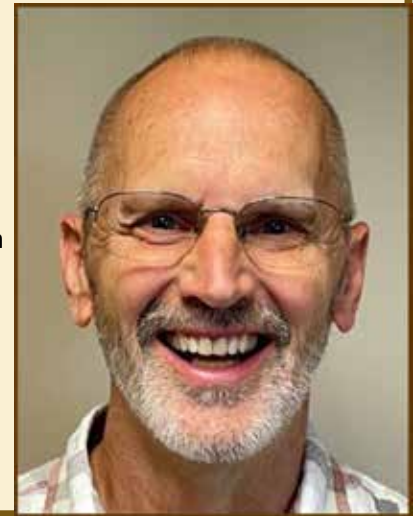
Over the years I have made lighthouses, hollow forms, bottle stoppers, etc. Two lathes later and I don't know how much money I have spent; I have settled on making mainly bowls. Each piece of wood presents its own challenges and opportunities as I create a variety of sized and styled pieces.

Resins entered my shop a few years ago. I started filling gaps and cracks and now play with other ways to add color and features to my works.



My demonstration will talk about types of resins, adding in color and solids, as well as how I bring the bowl rim to life. It will basically be a show and tell session with time for many questions.

Let's learn together.



Pat McCart - Maple



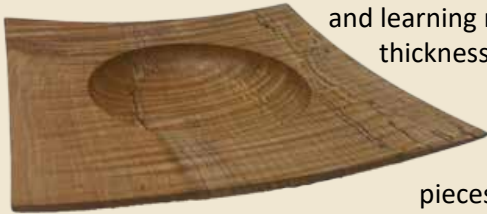
Roy Lane - Maple

January's President's Challenge Winner Ethan Green

We are so excited to tell you about our January President's Challenge recipient, Ethan Green. As we have had the pleasure to see some beautiful pieces of art he has brought to our show-and-tell last year, the most memorable to date, the rose root ball vase. In January, the President's Challenge was a square rimmed bowl. All of the submissions were stunning but there was one bowl that stood out above the rest, a beautifully mastered work of art made from Big Leaf Maple with extraordinary fiddleback with spalting and a gentle curve leading into a bowl. Stunning for the eye, inspired by the works of Richard Raffan, *The Art of Turned Bowls* and his information about curves; using a catenary curve for his bowl you can see it looks like a bowl in a bowl as the edges gently curve upwards with a bowl in the center with a walnut oil finish.



Ethan Green is retired from law enforcement and also ran a one man woodworking business for several decades. It is hard to believe that only two short years ago he came across an ad about wood turning instruction in Port Orchard, well, that piqued his interest and he signed up for his first lesson with Russell Neyman. That lesson turned into a great friendship and mentorship by Russell. Turning that first bowl became an obsession to learn more and Ethan started to read books by some masters of wood working, Richard Raffan and David Ellsworth are a couple of his favorites at this time. Being retired, Ethan feels blessed to be able to spend time focusing on the art of wood. Having had a one-man woodworking business, he always lived on the science of wood and is now moving towards artistry and becoming an artist, educating himself on learning how to see beyond the bark and into the tree and finding the best wood for his work. Instead of finding ways to dry wood, he is strategizing ways to keep his wood wet longer, working with form, and wood's natural tendency to move. On a quest to learn as much as possible, Ethan is looking forward to his class with David Ellsworth later this month and learning more about spirit forms, turned wet and to a thickness of about 1/8" and to better turn hollow forms.



Asking what he would consider the greatest complement on his work, he says, "I like making pieces that cause people to wonder, 'How did he do that?'" Thank you Ethan for starting off our year with

the bar set and goals to be met to up our game as a collective.



Scott Keenholts - Poplar



Terry Broberg - Maple



A Word From Kent Horton

As I write this newsletter article (on January 27th) I calculate there are only 117 days until the AAW International Symposium in Portland, Oregon

If you have not done so, I hope you will consider joining AAW and attending.

If you want to become a better woodturner, I encourage you to join AAW and take advantage of their many offerings in print, on line and their virtual demonstrations. It is all to help you improve your turning skills. The symposium in Portland on May 23-26th is shaping up to be a wonderful event with many excellent presenters.

Call for Volunteers

The success of AAW's annual symposium depends, to a large extent, on the cadre of volunteers who provide the support for the demonstrators and attendees. The call has gone out requesting folks with expertise as videographers and streaming technicians to help improve their on-line presentations. Members who wish to volunteer can go to the AAW website and click on the Portland logo or go to aawsymposium.org go to the bottom of the screen and click on the "volunteer" tab. Next, click on "sign-up" and you will see a comprehensive list of committees you might be interested in and the times volunteers are needed. Fill out your name, email address and T-shirt size. Last step, click on the "sign me up now" tab. That's it – Easy Peasy. I signed up to be assisting in the Tool Room on Friday afternoon with no problem.

AAW International Woodturning Symposium

The American Association of Woodturning's Annual Symposium is the biggest woodturning event in the world and has something for everyone, no matter your experience level. Learn from the best woodturners in the world, experience the industry's largest tradeshow, and browse wood art exhibitions.

aawsymposium.org

SPSW Polo Shirts

The first round of SPSW club logo polo shirts has been ordered and will be available for viewing at our February 15th meeting. This "trial run" was with the SPSW Board of Directors, so we will know if the sizes indicated are true to the real world. A sign-up sheet, for those interested, will be available at the February and March meetings.

Yours in turning

Kent Horton,
Director-at-Large
AAW Liaison
206-242-4432

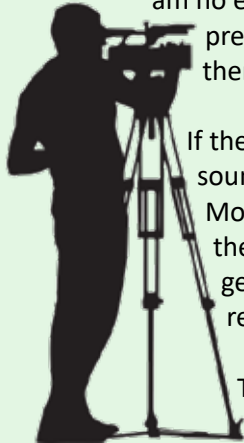


Justin Parson - Maple

A Note from our AV Co-ordinator

Hello SPSW Members,

I have taken on the role of improving the meetings by changing a single video camera on a boom arm into a multiple camera system with different angles to give you a more immersive experience. With this setup I discovered that I needed extra help so we can have our meetings start on time with a very limited setup window and was lucky enough to find a few members who were willing to help. Now there comes a time to admit that I am no expert in video production. I am completely self taught and I do my best to put on a great presentation despite having some hiccups occasionally. I would like to do better and therefore I am asking for help.



If there is anyone in the club who has audio visual production experience, mainly sound engineering, we would love it if you could volunteer and join our team. Most of the time I'm guessing on what to do at the sound mixer while juggling the video production switching and monitoring Zoom all at the same time so it is getting overwhelming and I am asking for some help. If you are interested please reach out to me at avcoord@spswoodturners.org

Thank you and happy turning,
Ramon Lyn



Don Norton - Walnut

Ed White
English & Dark Walnut

JoAnn Amberg - Cherry

Jim Robson
Maple

Brian Finch - Hickory

Color your prepared bowl using fiber reactive dyes at the Mini-Symposium in March.

Would you like to color your own bowl with fiber reactive dyes as demonstrated by Eileen Collins at our January club meeting? If so, plan to bring your prepared bowl. Eileen will bring her selection of 139 dyes for you to choose one or two from to try. She will guide you through the process.

Set-up: We will be using the new Jet lathe (12" throw) Drive head connection choices 1.0" x 8TIP and 1.25" x 8TPI will be accommodated.

Piece preparation: Exterior completely sanded, raise the grain at least once. Surface ready to go. (Any sanding after color application will remove the color). Work piece mounted or ready to mount with bottom of bowl exposed. If need be, a live center can be used. Eileen will also be bringing several airbrushes for you to try. This includes the \$20 airbrush she just purchased. **If you plan to take advantage of this opportunity, bring safety glasses and protective gloves.**

Michael Poirier
Maple / Walnut /
African Mahogany



John Howard
Mahogany



Henry Retailliau
Willow



Gene Sodano
Yew

SPSW Store February

Thanks to everyone that made the January meeting the best Store Sales night that we have ever had! I am sure that our big \$1.00 sale on packages of 10 each Eka-Blue 2" sanding disks had a lot to do with the increased traffic, but we sold more of everything than we have in the past. Those 2-Inch sanding discs will be on sale until they're gone. We quickly sold out of the course 80 grit packages but still have some 120, 180, 280, and 400 grit left. I suspect they will go fast, so if you would like to stock up, I recommend that you get there when we get set up at about 6:05PM then make a bee line for the sales table. Everything is first come first serve. I will be replacing those Eka-Blue discs with Woodturner's Wonders 2-inch Green Wave and 2-inch Remover/Smoothen discs. These are very similar to the Green Wave discs except that they do not have a wavy edge.

I have been asked to bring Anchor seal, high-grit 3-inch sanding discs, some Superglue caps, and some fine glue applicator tips If you need any of that. If you can think of anything else that you want me to be sure to bring, just email me at jhowardcdt@comcast.net and I will try to bring it. Also, if you think of anything that you think we should be carrying because it is commonly used, then then please let me know. If it looks like something a lot of members would like to buy from us, we will consider adding it to our inventory.

The SPSW store sales table offers some of the best prices you will find anywhere. We buy in bulk, usually get a can AAW chapter discount, and we work any deals we can on shipping that we can. All members involved in store sales are volunteers and any profits go back to the club. So you get a great deal. The ability to purchase through our store is a big member benefit. Do yourself and your wallet a favor and buy through the store sales table!

Stop by and see us even if you don't need anything. We love to talk to you and you can let us know how you like the materials you buy from us. Feed-back is always welcome!

Until then, keep those chips flying!

John Howard

Store Sales Price List

Brand	Description	Unit Size	Price
Adhesives			
Starbond	Starbond Thin, kit	2 oz	10.00
	Starbond Instaset accelerator	2 oz	4.00
	StarBond Thin, set	16 oz	35.00
	StarBond Medium	2 oz	10.00
	Accelerator, Pump	2 oz	9.00
Bob Smith Industries	MaxiCure, Extra Thick Gap Filling	2 oz	9.00
	Maxicure Medium, Gap Filling	2 oz	9.00
	20 minute cure epoxy resin	13 oz Kit	12.00
Insta-Set	Insta-Set Accelerator, Pump Spray	2 oz	10
Adhesive Accessories			
	Extender tips	3 ea	1.00
	Extra fine glue tips	3 ea	1.00
	Tubing (2 feet)		1.00
	CA Applicator, Fine	3 ea	1.00
	Glue Cap Replacement	ea	1.00

Store Sales Price List continued

Brand	Description	Unit Size	Price
Adhesive Accessories Continued			
	SuperSolvent	2 oz	7.00
	Superglue Pipettes (Eye Droppers)	3 ea	1.00
Sanding			
Woodturners Wonders	Toughy Tapered Sanding Disc Mandrels 2"	ea	7.00
	Tuffy Tapered Sanding Disc Mandrels 3"		10.00
	Soft Intermediate Sanding Pad 2"	ea	4.00
	Soft Intermediate Sanding Pad 3"	ea	5.00
	Green Wave Mylar backed Sanding Disks, 3" Oversized	25 Pack	7.00
	Wonderweave 2" disk Kit, Low Grits (60- 600)	40 Discs	9.00
	Wonderweave 3" disk Kit, Low Grits (60- 600)	40 Discs	14.00
	Wonderweave disk Kit 3" High Grits Grits (800-3000)	25 Discs	12.00
	Wonderweave 3X8" 60-600 rit sheets Assortment	Pack	5.00
	1/3 Sheet Hook and loop Flexible Hand Sanding Pad		8.00
	Sand Paper, Ekablue from Sweden 120 - 360 grit	2 Sheets	1.00
Uneeda NW	EkaMant Blue Sanding Discs 2" 120 - 400 Grit	10 Pack	3.00 1.00
	EkaMant Blue Sanding Discs 3" 80 - 1000 Grit	10 Pack	4.00
	Emory Cloth Sheets 8.5X11" (120, 180, 220, 320)	ea	1.00
	9x11 Wet Dry Sand Paper 400 - 600 Grit	4 Sheets	3.00
Ultra Flex	Micromesh Wet/Dry Sand Paper	2 Pack	24.00
Finishes and Finishing Materials			
GluBoost	Fill n Finish Kit		43.00
Doctors Workshop	Walnut and Waxpaste	Jar	10.00
	Walnut Finishing Oil		14.00
	Microcrystal Wax Bowl Finish	Pint	14.00
	Walnut Oil and Wax Woodturning Finish	Pint	14.00
	Walnut Oil/Carnuba Wax & Shellac Woodturning Finish	Pint	18.00
	High Build Friction Polish	Pint	18.00
	Pens Plus Finish	Pint	18.00
Doctors Woodshop	Cutting Board Wax	4 oz	12.00
Lathe and Turning Accessories			
	Lyn Grinder Angle Gauge	ea	5.00
	Anchor Seal 2	1 Gal	18.00
	E-Z Lock Metal screw inserts, 10/bag	Pkg	5.00
	E-Z Lock Metal screw inserts, 25/bag	Pkg	13.00
Multi-Marketing Group	Index Wheel for 3/4", 1" or 1-1/4" spindle		20.00
	Dyna-Glide Plus dry lubricant, 13 oz. Aerosol Can	ea	15.00

YOUR SPSW OFFICERS

President: Kathy Garlick

253-204-9278

kgcloset@yahoo.com

V. President / Program Chair: Ed White

206-218-3797

eswhitearts84@outlook.com

Secretary: Mark Gilbert

secretary@spswoodturners.org

Treasurer: Pam Parson

253-381-7130

spswtreasurer@gmail.com

Newsletter: Suzette Edwards

253-846-8418

winginsue@gmail.com

Membership: Terry Broberg

253-606-2190

membership@spswoodturners.org

Webmaster & Social Media: Tim Spaulding

webmaster@spswoodturners.org

Store Sales: John Howard

253-370-5704

Industry Coordinator: Pat McCart

253-927-5464

industry@spswoodturners.org

AV Coordinator & Zoom Tech: Ramon Lyn

904-993-8106

avcoord@spswoodturners.org

tech@spswoodturners.org

Wood Rat: Doug Reynolds

253-941-7985

programs@spswoodturners.org

Mentorship: Michael Poirier

mentorship@spswoodturners.org

Director At Large: Dave Best

253-732-5654

atlarge2@spswoodturners.org

Director At Large, AAW Liaison

Kent Horton

scimankent@gmail.com



SPSW is a chapter of the American Association of Woodturners (AAW). Many of our members are just members of the chapter but not the American Association of Woodturners (AAW). **The AAW offers an introductory free 3-month trial membership to chapter members.** The free membership allows access to all online publications like The American Woodturner, Woodturning FUNdamentals magazine, and AAW e-newsletters.

Visit the website www.woodturner.org (or click the link if you are an email newsletter subscriber) and look under Membership then Join Today. Scroll to the bottom of the page. The above hyperlink will also take you there. For those who prefer to do it by phone, call 877-595-9094 M-F 8:30 to 4:30 Central time.



Looking for some inspiration?

Check out the [SPSW YouTube Channel](#)

2024 Membership Renewals



If you enjoy SPSW please take the time to renew your membership.

The dues for 2024 are only \$45 for the entire year and that is for your whole family.

Terry Broberg, our Director of Membership, is taking dues for the 2024 year. I hope each of you will join us again for another event-filled year. I would like to encourage everyone to get your 2024 dues paid as soon as possible.

Your dues are what enable us to rent our great meeting facility, provide equipment like the new multiple camera system used to enable members to better view demonstrations in person and on-line, and purchase the tools and equipment we need to run demonstrations and sawdust sessions.

You can either pay your dues at the meeting, or an even easier method is to do it online through the members only tab on the [SPSW website](#).



Zoom Meeting If you haven't been on Zoom before, just follow the steps below. **(If you have been in a Zoom meeting before, just start at step 3.)b.**

1. **The Zoom meeting invitation is only sent to active members.** So, if you have not paid your dues since October 2023, you will need to go to the members tab on the [SPSW website](https://www.spsw.org) (spswoodturners.org) and renew your membership. Please note that it would normally cost more for just one of these demonstrations than your SPSW dues for the entire year.
 - a. Those of you who get the newsletter by snail-mail will need to get us an e-mail address where we can send your meeting invitation. Please send it to (membership@spswoodturners.org)
2. Before the scheduled meeting, you need to go to zoom.com and download the free "Zoom Meetings" app. The Zoom download is quick, easy, and free!
3. **Information and Invitation Delivery Schedule:**
 - a. **The Wednesday the week before the meeting** – The Zoom Meeting Invitation will go out to our active member's distribution list. (This is if we get the link by then)
 - i This invitation contains a link that appears in blue letters. Just click it to join the remote demo on Thursday.
 - ii Please save this where you can find it.
 1. If you don't see the invitation(s) in your inbox, then please check your "junk" or "spam" folder. If you get our newsletters, the meeting invitation should come right into your inbox.
 2. If you did NOT get the email, the link will be posted on the SPSW website under [For Members/Zoom Meeting Link](#)
 - b. **The Saturday before the meeting.** – A reminder will be e-mailed to our active member's distribution list.
 - c. **The day of the meeting** - Log into the meeting by 7:00pm
 - i. The demo will start at 7:00pm
 - ii. When you click on the link, you will be asked if you want to join with video and audio. Answer "yes" to both, then you will enter a virtual waiting room. Wait just a few seconds and one of the co-hosts will admit you into the actual meeting.
 - iii. **Note:** If you have previously downloaded the app, you may see an update is available. If you see it, please update your app. Zoom is making frequent changes to the program to strengthen security.
 - iv. Devices used to view the demo can be smartphones, tablet computers, laptops, etc. To fully participate, the device needs to have audio and a camera.

We are now collecting dues for 2024. Dues for individuals or for the whole family are \$45/year. We accept cash, check, Visa®, MasterCard®, American Express®, Discover® or debit card.

This is still one of the best deals around. For just \$45 you get a monthly meeting featuring top notch presenters, an avenue to display your talents, and a forum to seek advice and ask questions. You have access to a group of mentors who can help you improve your skills.

Also, there is a monthly “open turning session” (our Sawdust Sessions) on the Saturday following the meeting. Use the membership application below and pay at the meeting or mail it to the address on membership form.

We now also have the option for you to join, renew, or just donate. We are a registered 501 (c)(3) non-profit organization. You can pay at the meeting, or online! Just go to our website (www.spswoodturners.org), fill out the form, and pay with PayPal.

AAW membership is separate from membership in the SPSW Chapter. Now is also a good time to sign up for the [American Association of Wood turners \(AAW\)](#). Annual memberships in the AAW operate on an yearly anniversary cycle, whereby your membership will start with your join date and continue until the same date the following year.

If your level of AAW membership includes a printed copy of the American Woodturners journal, you will receive six issues starting with the issue published after you join or renew.

South Puget Sound Woodturners (SPSW) Membership Application

Name: _____ Membership: New
 Renewal

Address: _____

City: _____ State: _____ Zip: _____

Telephone number: _____

Email: _____

How long have you been turning? _____ AAW Member?: _____

Interest: Spindle Turning Bowls Vases Segmented turning Tool making
Tool Sharpening Pen Making Other

Membership dues for South Puget Sound Woodturners are \$45.00 annually. IF paying by mail, make the check payable to South Puget Sound Woodturners (or SPSW) and mail this form to:

South Puget Sound Woodturners
PO Box 1792
Milton WA 98354

If paying online, [visit our website](#), fill out the online form and pay with Paypal