



Chips & Shavings

Feb. 16, 2015

February - David Best



I have been tinkering with wood since I was 9. I got introduced to turning in the late 80's when my wife and I gave my father-in-law a book by Dale Nish called "Creative Woodturning" for Christmas. It totally captured my interest. I learned about the Seattle turning club but my job didn't allow me the time to go. A friend told me about a new club starting in Fife and I have been a member since the first meeting. Last October I had the opportunity to take a free week long class from J Paul Fennell at Arrowmont, a craft school in Gatlinburg Tenn. Ever since I first saw his work I've been mesmerized by them. It was a wonderful experience to turn for a week in a small class with Paul there to guide you through his techniques. I will attempt to show you the tools and approach needed to create pieces like his. The bottom line is anyone can do this type of work if you are willing to devote the time. David Best

We received this thank you letter from one of the parents at the Olympia Waldorf School . I don't have room to attach the thank-you cards, but they will be available on our website.

Hi
I am sending a quick thank-you to you and all of your members for the donations that you helped collect for the Grade 4 class at the Olympia Waldorf school. The children were really excited to receive them. It was such a great life lesson for them to have the community come together and support them after the theft of their tools and hammers.
I have attached their thank-you cards.
Cheryl Plaza
Mother of a grade 4 student

Next month we will have the first of this year's Mini Symposiums. The success of this event depends entirely on your participation as a demonstrator. Please consider sharing some of your experiences with our membership in a very great environment.

There will be a sign up sheet passed around at this month's meeting.

Contents:

Cover & SPSW Contacts	Pg. 1
President's Letter	Pg. 2
SPSW Calendar	Pg. 3
January Event Pics	Pg 4&5
2013 Membership App	Pg 6
Mentor Contacts	Pg. 7
Announcements	Pg 8
Vendors	Pg. 9

SPSW Contacts:

President: Pat McCart
(253) 927-5464
jmccart5464@msn.com

V. President: David Best
(360)-893-2210
Bompadavid@gmail.com

Secretary: Fred Abeles
(253)631-2534
Fredabe@hotmail.com

Treasurer: Wayne Duckett
(253) 759-5264
Slomarch@comcast.net

Membership: Stan Gardner
(253) 630-9645
Stangard@comcast.net

Editor: Bill Wood
(253) 891-2887
Tappsturner@comcast.net

Sawdust Sessions:
Pat McCart (Coordinator)
(253) 927-5464
Jmccart5464@msn.com

Industry Coordinator:
Andy Firpo
(206) 362-1314
Drewdog@drewdog.com

Member At Large:
Jim Cotter
cotterjimmy@hotmail.com

Wood Rat
Jerre Griffin
jgriffin@centurytel.net



Letter from the President



Here today, gone to Maui.

Just a few days after the January SPSW meeting I was blessed with the opportunity to take my wife to the Hawaiian Islands to celebrate her birthday.

We stayed in Honolulu at a Waikiki beach front hotel. Pearl Harbor and the USS Arizona Memorial are must see sights that humbled us and reminded us how blessed we are in this country.

We ventured to the North Shore and witnessed the awesome power of 30' to 40' waves and marveled at the dozens of surfers fearlessly carving up the faces of those monstrous walls of water. Swimming in the warm waters of Hanauma Bay surrounded by brightly colored fish was more my speed.

Our adventure moved to Maui where we ate ice cream under the biggest Banyan tree in Hawaii and were treated to a show performed by migrating Humpback whales worthy of the National Geographic channel.

Hawaii is home to dozens of different types of trees that are highly sought after by all types of woodworkers. A trip to a lumber yard or sawmill was on the list of things I wanted to do, a quick Google search turned up a phone number. The next day we went "up country" and ended up just outside of Makawao where I spent a couple of hours wandering around his log yard and rummaging through his roughed out blanks many of which were from woods I had never even heard of let alone ran my hands over. If you are ever in Maui and want to get a great piece of wood at a good price give my friend Gilly a call.

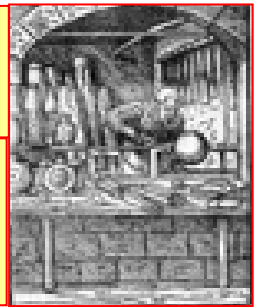
With all the great things we saw and amazing places we went the hands down winner was our thrilling helicopter ride over the mountains of west Maui and the island of Molokai. Hurdling through impossibly steep canyons with walls that soared over 1000' straight up was worthy of anyone's bucket list. The next time we go I will spend half as much money on food and twice as much on helicopter rides.

This month's meeting will showcase the talents of Dave Best. Dave will be showing us some of the techniques he learned at a class he took from J. Paul Fennell. This month's AAW magazine has a feature article on J. Paul Fennell along with several pictures of his work.

See you on the 19th

Pat

Thank you to Paul Ritter, our new AAW representative. For those of you who have not joined, you should give it some serious thought. Receiving the American Woodturner magazine is reason enough to join. Besides this fantastic magazine there are any number of advantages to joining, free access to a complete series on woodturning is also available to members on the AAW website.



SPSW 2014 Event Calendar

January 2015

15th - Membership Mtg
Dan Stromstad
17th - Sawdust Session

27th - Board Mtg
Pat McCart's

February 2015

19th - Membership Mtg
David Best
21st - Sawdust Session
24th - Board Mtg
Pat McCart's

March 2015

19th - Membership Mtg
Mini Symposium
21st - Sawdust Session
24th - Board Mtg
Pat McCart's

April 2015

19th - Membership Mtg
50 Tips
21st - Sawdust Session
28th - Board Mtg
Pat McCart's

May 2015

21st - Membership Mtg

23rd - Sawdust Session
26th - Board Mtg
Pat McCart's

June 2015

18th - Membership Mtg

20th - Sawdust Session
30th - Board Mtg
Pat McCart's

July 2015

16th - Membership Mtg
Roy Lane
28th - Board Mtg
Pat McCart's
TBD - Picnic & Wood Auc.
26th - Creativity in
Woodturning - Olympia
No Sawdust Session this month

August 2015

20th - Membership Mtg

22nd - Sawdust Session
25th - Board Mtg
Pat McCart's

September 2015

17th - Membership Mtg
Mini Symposium
19th - Sawdust Session
30th - Board Mtg
Pat McCart's

October 2015

16th - Membership Mtg

18th - Sawdust Session
27th - Board Mtg
Pat McCart's

November 2015

19th - Membership Mtg

21st - Sawdust Session
24th - Board Mtg
Pat McCart's

December 2015

17th - **Holiday Mtg**
No Sawdust Session
Jan 5th - Board Mtg
Pat McCart's

No Sawdust Session this month

Upcoming national & international events courtesy of Fred Holder and More Woodturning

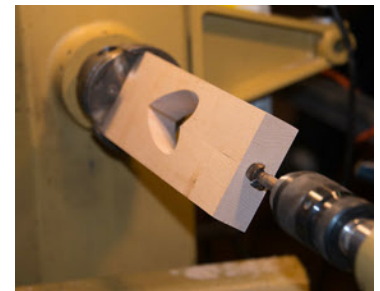
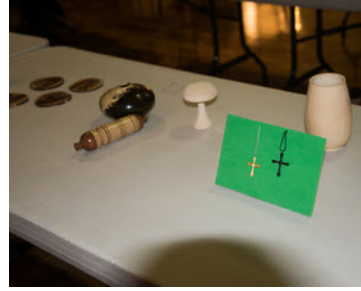
This Month at a Glance

- Membership Mtg. - Feb. 19th (Thur.) 6:00 - 9:15 pm at Fife Senior Center
- Sawdust Session - Feb. 21st (Sat.) 9:00 at Nancy Sweazey's
- Board Mtg. - Feb. 24th (Tue.) 7:00 - 8:30 pm at Pat McCart's, members welcome (RSVP to Pat McCart)



Dan Stromstad Demo Pictures

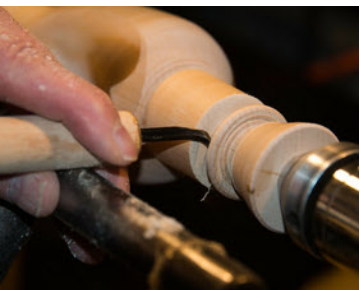
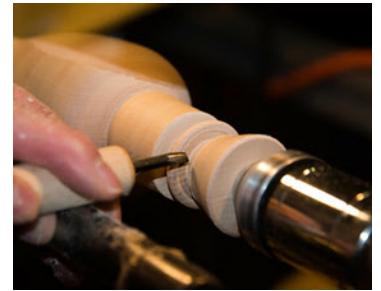
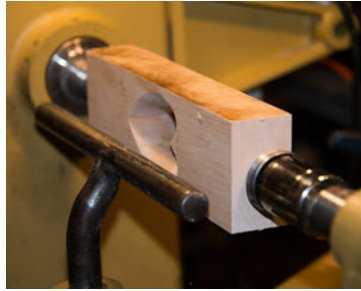
Photos by Fred Abeles: For additional Club photos by Fred please go to <http://avoided-artist.smugmug.com/Woodworking>





Dan Stromstad Demo Pics (cont'd)

Photos by Fred Abeles: For additional Club photos by Fred please go to <http://avoided-artist.smugmug.com/Woodworking>





We are collecting 2015 dues. Dues for the whole family are \$35. We accept cash, check, credit card, and PayPal. This is still one of the best deals around. For this, you get a monthly meeting featuring top notch presenters, an avenue to display your talents, and a forum to seek advice and ask questions. You have access to a group of mentors who can help you improve your skills. Also, there is a monthly open turning session (Sawdust Session) on the Saturday following the meeting. Use the membership application below or pay at the meeting.

And now a new way to pay. Go to our website, fill out the form, and pay with PayPal.

We now also have the option for you to join, renew, purchase supplies or just donate (we are a registered 501(c)(3) non-profit) using Square. You can use your Visa®, Mastercard®, American Express®, Discover® or debit card.

Now is also a good time to sign up for the American Association of Woodturners (AAW). Annual memberships in the AAW operate on an anniversary cycle, whereby your membership will start with your join date and continue for one year.

If your level of membership includes a printed copy of the American Woodturner journal, you will receive six issues starting with the issue published after your join or renew date.

See <http://www.woodturner.org/org/mbrship/index.htm> for the various levels of membership.

South Puget Sound Woodturners (SPSW)

Membership Application

Name _____

Address _____

City _____ State _____ ZIP Code _____

Telephone No. _____

Email Address _____

How do you want to receive the newsletter? By: email US Mail

How long have you been turning? _____ AAW Member? _____

Woodturning interests: Spindle turning _____ Bowls _____ Vases _____

Segmented turning _____ Tool making _____

Tool sharpening _____ Other _____

Membership dues for South Puget Sound Woodturners are \$35.00 annually. Please make check payable to South Puget Sound Woodturners (or **SPSW**) and mail with this form to:

South Puget Sound Woodturners

P.O. Box 1792

Milton, WA

98354



Announcements

Are you a new member or visiting our club for the first time?

We are glad you are here and want to welcome you to our general membership meeting. **Please introduce yourself to an officer or mentor so we can welcome you.**

Need help with a splintering question?

Contact one of our "MENTORS". These club members have stepped up and would like to use their knowledge and expertise to help other turners with their questions. If these turners aren't able to answer your question, they will do their best to help you find a solution.

SPSW Mentors

- **Jim Cotter**
(206) 954-9548
- **Paul Crabtree**
(253) 273-2147
- **Hal Johnson**
(425) 788-2221
- **Eric Lofstrom**
(253)-320-4788
- **Pat McCart**
(253) 370-8986
- **John Moe**
(425) 643-4522
- **Dave Schweitzer**
(360) 432-9509
- **Bob Sievers**
(360) 897-8427
- **Jack Wayne**
(425)488-9561

- **SEATTLE AAW MEMBERSHIP MEETING** – 2nd Thursday of each month, VFW Hall, 4330 148th Ave NE, Redmond, WA 98052
- **OLYMPIA AAW MEMBERSHIP MEETING** – 4th Thursday of each month, Thurston County Fairgrounds
- **Wooden Laser Engraved Name Tags** are now available. The cost is \$10. To order a name tag please stop in at our supplies table at the monthly meeting.
- The South Puget Sound Woodturners now has a club policy for harvesting wood as a club function. We also have a Wood Rat - Jerre Griffin. You can contact Jerre at jgriffin@centurytel.net

MORE WOODTURNING

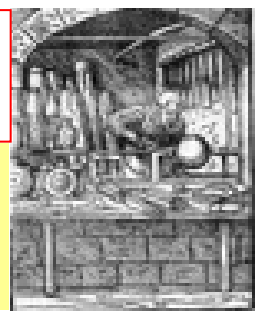
The magazine for turners. Published electronically 10 times a year by Fred Holder. One yr: \$25.00; Two yrs: \$50.00; Three yrs \$75.00. Effective immediately More Woodturning is published only electronically at: www.morewoodturning.net Lots of great information for your browsing pleasure.
More Woodturning PO Box 2168 Snohomish WA 98291-2168
Phone: 360-668-0976

Oregon Woodturning Symposium

March 6th - 8th, 2015 Linn County Expo Center, Albany, OR.

Demonstrators include Mike Mahoney, Jimmy Clewes, Trent Bosch, Kirk DeHeer, Dale Larson, Lyle Jamieson, Molly Winton, Eric Lofstrom, Nick Stagg, Sarah Robinson, and Don Ward.

Find out more at their website: www.oregon-woodturningsymposium.com



For Sale

Alan York has a list of tools from an estate. All items are near new condition

Jet 1 hp vacuum + stand, hood, and hose - \$200

Porter Cable pancake compressor - \$70

8" double-speed grinder - \$90

Pinnacle parting tool - \$30

Crabtree hollowing tool - \$110

Stay-Put work lamp w/ bench mount base - \$35

Sierra Diamond Dresser for grinder \$35

Contact Alan York 253-925-9177 alan.york@libertymutual.com

I have a Wood Cut Coring system I've had for a couple of years that I would like to sell. It's been used about a dozen times. When I upgraded my lathe to a Powermatic I also just updated the coring system to a McNaughton system. I'm asking \$150.00 for the system. Any questions let me know.

Jim Fehr

jimmyfehr@gmail.com

253-854-5896



Our Sponsors

Tukwila 206-2474-9161



ROCKLER®
WOODWORKING AND HARDWARE

CRAFT SUPPLIES USA
— THE WOODTURNERS CATALOG —

(800) 551-8876
<http://www.woodturnerscatalog.com>

Equipment Sales & Surplus
1801 West Valley Hwy N
Auburn, WA 98001-1605



(800) 683-8876 packardwoodworks.com

Treeline
1221 East 1120 South
Provo, UT 84606 (800)598-2743
<http://www.treelineusa.com>

Klingspor's Woodworking
P.O. Box 3737 Hickory, NC 28603-3737
(800)228-0000



D-WAY TOOLS

www.d-waytools.com 360-432-9509



MORE WOODTURNING

www.morewoodturning.net

GD Design, LLLC
Custom Tool and Machining
Jerry Little
296-242-0337 solidaxle@comcast.net

Woodline USA
1-800-472-6950
Use code SPSWT at checkout

Beginning and advanced woodturning classes.
Call Ed Quesnell at 206-406-5766,
Tacoma, WA.

**Tropical Exotic Hardwoods
Of Latin America**
Mitch Talcove (760) 434-3030



Seattle (206) 767-6394 <http://woodcraft.com>



Joan & John Schmit 253-891-9413



(800) 547-5461

**CROSSCUT
HARDWOODS**
Seattle (206) 623-0334



DJ & Judi Brown
(253) 302-5566
Laser Engraving

Woodturning classes – Satisfaction guaranteed.
Call Larry Miller 360-412-1583,
Olympia, Washington

In order to receive club discounts from some of our mail order vendors we are required to provide them with an up-to-date membership list. This is so to verify that you are a member in good standing with the club and therefore entitled to the discount they provide us. If you would prefer not to be included on the list please email Stan Gardner Stangard@comcast.net.