



# Chips & Shavings

Oct. 13, 2014

## Warren Swift



Have you ever wondered how to make those bowls with at least part of the bark still on the edge? Well, this month you are in for a treat. Our own member, Warren Swift, will demonstrate how to turn one of these marvelous natural edged bowls.

If you have never made one these natural edged bowls, you will come away with the basic knowledge of how it is accomplished. You will learn how to mount the wood, turning, sanding, and finishing techniques, and what tools and supplies are used to make these bowls. If you have made them before, chances are pretty good that you will pick up some excellent tips on how to improve your work. Everyone benefits from watching others turn and seeing what steps they take to make their product.

Be sure and not miss this event.

### Announcements:

Beginning Nov. 3rd, 2014 Sumner Woodworker Store will be open on Mondays. There new schedule will be Monday through Saturday 9:30 to 5:30

On Nov. 22nd & 23rd the Northwest Carvers Association will have their 34th annual show & sale. They have a new venue this year: The Pioneer Park Pavilion at 330 S. Meridian in Puyallup. See page 9 of this newsletter for their flyer.

One more reason to join AAW. AAW has a seven part instruction manual that was developed by Alan Leland. It is full of tips and projects AND it is free for AAW members.

Our club elections will be held in November. If you interested in being one of the club officers please see Pat McCart at the meeting.

This month we will begin selling raffle tickets for a used mini lathe. The drawing for the lathe will be held in January.

### Contents:

Cover & SPSW Contacts	Pg. 1
President's Letter	Pg. 2
SPSW Calendar	Pg. 3
Sep Show & Tell Pics	Pg. 4
Sep Event Pics	Pg 5&6
2013 Membership App	Pg. 7
Mentor Contacts	Pg. 8
Announcements	Pg. 8
NW Wood Carvers Flyer	Pg. 9
Vendors	Pg. 10

### SPSW Contacts:

**President: Pat McCart**  
(253) 927-5464  
[jmccart5464@msn.com](mailto:jmccart5464@msn.com)

**V. President: David Best**  
(360)-893-2210  
[Bompadavid@gmail.com](mailto:Bompadavid@gmail.com)

**Secretary: Fred Abeles**  
(253)631-2534  
[Fredabe@hotmail.com](mailto:Fredabe@hotmail.com)

**Treasurer: Wayne Duckett**  
(253) 759-5264  
[Slomarch@comcast.net](mailto:Slomarch@comcast.net)

**Membership:** Stan Gardner  
(253) 630-9645  
[Stangard@comcast.net](mailto:Stangard@comcast.net)

**Editor: Bill Wood**  
(253) 891-2887  
[Tappsturner@comcast.net](mailto:Tappsturner@comcast.net)

**Sawdust Sessions:**  
**Pat McCart (Coordinator)**  
(253) 927-5464  
[Jmccart5464@msn.com](mailto:Jmccart5464@msn.com)

**Industry Coordinator:**  
**Andy Firpo**  
(206) 362-1314  
[Drewdog@drewdog.com](mailto:Drewdog@drewdog.com)

**Member At Large:**  
**Jim Cotter**  
[cotterjimmy@hotmail.com](mailto:cotterjimmy@hotmail.com)

**Wood Rat**  
**Jerre Griffin**  
[jgriffin@centurytel.net](mailto:jgriffin@centurytel.net)



## Letter from the President



### Changes and chances for October

With golden leaves littering my front yard and sunset coming earlier every evening the end of one of the best summers in recent memory is drawing to a close. Fall brings with it many great things some of which include football, warm days and cool nights along with more opportunities to spend hours in my shop doing what I love.

This summer has been very hectic for me and my chances to turn have been few and far between. Luckily for me a friend that had never turned before stopped by with some freshly cut horse chestnut and a desire to see how a bowl was made. Within a couple of hours we had cut a couple of blanks and turned his first bowl. When we were done the only thing bigger than the pile of shavings on the floor were the smiles on our faces.

Fall also signals some important events for the members of the SPSW. The November meeting will give every member a chance to join the Board of Directors and bring their unique talents to the day to day operations of your club.

November will also be the first month that we will start taking dues for 2015. After much discussion and review of the finances the board has decided that it will be necessary to increase the dues to \$35 per year. To make this as easy on everyone as possible and to encourage the timely paying of the dues we are offering those that pay their dues in November, December or January the old price of \$30.

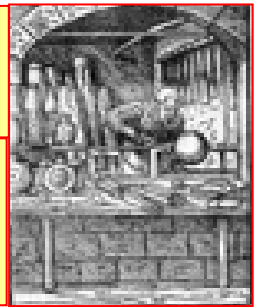
See you on the 16<sup>th</sup>

Till then be safe, have fun and make some shavings!

Pat

---

We are still looking for volunteers to help out the club. Please folks, step up and talk to Pat or one of the other officers. None of the open tasks require a bunch of time, but without them the club cannot function nearly as well.. We are looking for an Industry Coordinator, a Librarian, and an AAW Rep. We are still looking for additional help in setting up equipment for the meetings.



# SPSW 2014 Event Calendar

## January 2014

16th - Membership Mtg  
**Andy Firpo**  
18th - Sawdust Session  
  
28th - Board Mtg  
Pat McCart's

## February 2014

20th - Membership Mtg  
**Carol Zandell**  
22nd - Sawdust Session  
  
25h - Board Mtg  
Pat McCart's

## March 2014

20th - Membership Mtg  
**Don Derry**  
22nd - Sawdust Session  
  
25th - Board Mtg  
Pat McCart's  
22nd - Cindy Drozda -  
Anacortes

## April 2014

17th - Membership Mtg  
**Mini Symposium**  
19th - Sawdust Session  
  
25h - Board Mtg  
Pat McCart's

## May 2014

15th - Membership Mtg  
**Larry Miller**  
17th - Sawdust Session  
  
27th - Board Mtg  
Pat McCart's  
  
15th - 17th - Utah Symposium  
  
Orem, Utah

## June 2014

19th - Membership Mtg  
**Molly Winton**  
21st - Sawdust Session  
  
24th - Board Mtg  
Pat McCart's  
  
13th - 15th - AAW Symposium  
  
Phoenix, AZ

## July 2014

17th - Membership Mtg  
**Roy Lane**  
29th - Board Mtg  
Pat McCart's  
20th - Picnic & Wood Auc.  
  
26th - Creativity in  
Woodturning - Olympia  
  
**No Sawdust Session this month**

## August 2014

21st - Membership Mtg  
**Mini Symposium**  
23rd - Sawdust Session  
  
26th - Board Mtg  
Pat McCart's

## September 2014

18th - Membership Mtg  
**Vern Tater**  
20th - Sawdust Session  
  
30th - Board Mtg  
Pat McCart's

## October 2014

16th - Membership Mtg  
**Warren Swift**  
18th - Sawdust Session  
  
28th - Board Mtg  
Pat McCart's

## November 2014

20st - Membership Mtg  
**Eric Lofstrom**  
22nd - Sawdust Session  
  
25th - Board Mtg  
Pat McCart's

## December 2014

18th - **Holiday Mtg**  
No Sawdust Session  
  
Dec 30th - Board Mtg  
Pat McCart's  
  
**No Sawdust Session this month**

Upcoming national & international events courtesy of Fred Holder and More Woodturning

## This Month at a Glance

- Membership Mtg. - Oct. 16th (Thur.) 6:00 - 9:15 pm at Fife Senior Center
- Sawdust Session - Oct. 18th (Sat.) Bowl Coring Demonstration
- Board Mtg. - Oct. 28th (Tue.) 7:00 - 8:30 pm at Pat McCart's, members welcome (RSVP to Pat McCart)



# Show & Tell

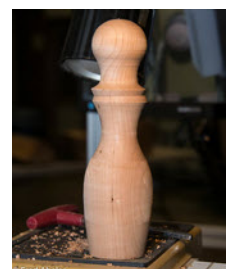
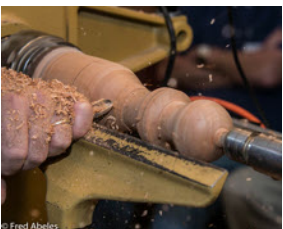
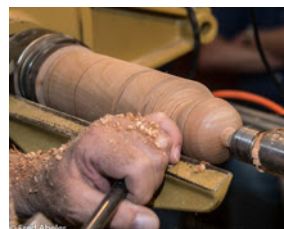
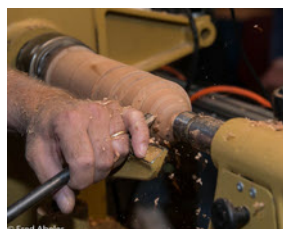
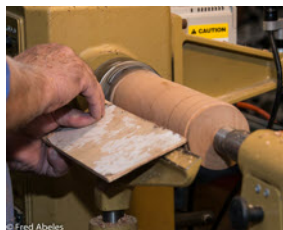
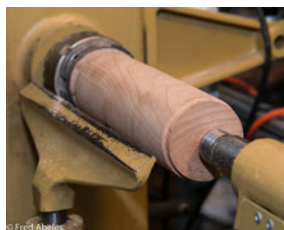
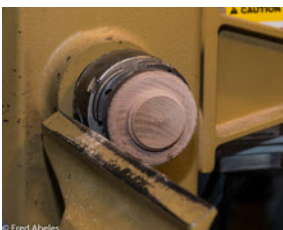
Pictures courtesy of Fred Abeles  
(View more photos at <http://avoided-artist.smugmug.com/>)





## Vern Tater & Sawdust Session Pics

Photos by Fred Abeles: For additional Club photos by Fred please go to <http://avoided-artist.smugmug.com/Woodworking>





# Vern Tater & Sawdust Session Pics (cont'd)

Photos by Fred Abeles: For additional Club photos by Fred please go to <http://avoided-artist.smugmug.com/Woodworking>





We are collecting 2015 dues. Dues for the whole family are \$35 (\$30 dollars if you pay before February). We accept cash, check, credit card, and PayPal. This is still one of the best deals around. For this, you receive get a monthly meeting featuring top notch presenters, an avenue to display your talents, and a forum to seek advice and ask questions. You also have access to a group of mentors who can help you improve your skills. There is also a monthly open turning session (Sawdust Session) on the Saturday following the meeting. Use the membership application below or pay at the meeting.

**And now a new way to pay. Go to our website, fill out the form, and pay with PayPal.**

*We now also have the option for you to join, renew, purchase supplies or just donate (we are a registered 501(c)(3) non-profit) using Square. You can use your Visa®, Mastercard®, American Express®, Discover® or debit card.*

Now is also a good time to sign up for the American Association of Woodturners (AAW). Annual memberships in the AAW operate on an anniversary cycle, whereby your membership will start with your join date and continue for one year.

If your level of membership includes a printed copy of the American Woodturner journal, you will receive six issues starting with the issue published after your join or renew date.

---

## South Puget Sound Woodturners (SPSW)

### Membership Application

Name \_\_\_\_\_

Address \_\_\_\_\_

City \_\_\_\_\_ State \_\_\_\_\_ ZIP Code \_\_\_\_\_

Telephone No. \_\_\_\_\_

Email Address \_\_\_\_\_

How do you want to receive the newsletter? By:  email  US Mail

How long have you been turning? \_\_\_\_\_ AAW Member? \_\_\_\_\_

Woodturning interests: Spindle turning \_\_\_\_\_ Bowls \_\_\_\_\_ Vases \_\_\_\_\_

Segmented turning \_\_\_\_\_ Tool making \_\_\_\_\_

Tool sharpening \_\_\_\_\_ Other \_\_\_\_\_

Membership dues for South Puget Sound Woodturners are \$35.00 annually. Please make check payable to South Puget Sound Woodturners (or **SPSW**) and mail with this form to:

South Puget Sound Woodturners

P.O. Box 1792

Milton, WA

98354



## Announcements

### *Are you a new member or visiting our club for the first time?*

We are glad you are here and want to welcome you to our general membership meeting. **Please introduce yourself to an officer or mentor so we can welcome you.**

#### *Need help with a splintering question?*

**Contact one of our "MENTORS"**. These club members have stepped up and would like to use their knowledge and expertise to help other turners with their questions. If these turners aren't able to answer your question, they will do their best to help you find a solution.

### SPSW Mentors

- **Jim Cotter**  
(206) 954-9548
- **Paul Crabtree**  
(253) 273-2147
- **Hal Johnson**  
(425) 788-2221
- **Eric Lofstrom**  
(253)-320-4788
- **Pat McCart**  
(253) 370-8986
- **John Moe**  
(425) 643-4522
- **Dave Schweitzer**  
(360) 432-9509
- **Bob Sievers**  
(360) 897-8427
- **Jack Wayne**  
(425)488-9561

- **SEATTLE AAW MEMBERSHIP MEETING** – 2nd Thursday of each month, VFW Hall, 4330 148th Ave NE, Redmond, WA 98052
- **OLYMPIA AAW MEMBERSHIP MEETING** – 4th Thursday of each month, Thurston County Fairgrounds
- **Wooden Laser Engraved Name Tags** are now available. The cost is \$10. To order a name tag please stop in at our supplies table at the monthly meeting.
- The South Puget Sound Woodturners now has a club policy for harvesting wood as a club function. We also have a Wood Rat - Jerre Griffin. You can contact Jerre at [jgriffin@centurytel.net](mailto:jgriffin@centurytel.net)

## MORE WOODTURNING

The magazine for turners. Published electronically 10 times a year by Fred Holder. One yr: \$25.00; Two yrs: \$50.00; Three yrs \$75.00. Effective immediately More Woodturning is published only electronically at: [www.morewoodturning.net](http://www.morewoodturning.net) Lots of great information for your browsing pleasure. More Woodturning PO Box 2168 Snohomish WA 98291-2168  
Phone: 360-668-0976

### FOR SALE

#### Deep Hollowing Tool

Brian McEvoy's Onegoodturn deep hollowing tool by LANGER Craftworks

[brian@onegoodturn.ca](mailto:brian@onegoodturn.ca)

[www.onegoodturn.ca](http://www.onegoodturn.ca)

[www.langercraftworks.com](http://www.langercraftworks.com)

#### Included:

1. Boring Bar - six feet, two piece
2. Adjustable Stand
3. Cutter - with cutter holder
4. Tool Rest
5. Light Kit (unused)

Please call or email Tom if interested.

Tom Bageant

253 851 6550

[bagsail@comcast.net](mailto:bagsail@comcast.net)





**WE ARE VERY PLEASED TO ANNOUNCE A BEAUTIFUL NEW  
VENUE FOR OUR**

## **34<sup>TH</sup> ANNUAL SHOW & SALE**



### **THE PIONEER PARK PAVILION**

**330 South Meridian  
Puyallup, WA**

**JUST FOUR BLOCKS NORTH OF OUR OLD LOCATION**

**EASY TO FIND  
PLENTY OF PARKING**

### **NEW DATES FOR THIS YEAR ONLY**

**Saturday November 22<sup>nd</sup>, 2014—10:00 am to 5:00 pm**

**Sunday November 23<sup>rd</sup> 2014—10:00 am to 4:00 pm**

**Start planning now to enter your woodcarvings and related arts to  
compete for ribbons and cash awards.**

**Entry fee of \$7.00 per item at the venue (Friday Nov 21<sup>st</sup> only) Pre-registration \$5.00.**

**Admission \$7.00 (good for both days), children under 12 free, participating carvers free.**

**Full details will be available at [www.woodcarvers.org](http://www.woodcarvers.org)**



# Our Sponsors

Tukwila 206-2474-9161



**ROCKLER®**  
WOODWORKING AND HARDWARE

**CRAFT SUPPLIES USA**  
— THE WOODTURNERS CATALOG —

(800) 551-8876  
<http://www.woodturnerscatalog.com>

**Equipment Sales & Surplus**  
1801 West Valley Hwy N  
Auburn, WA 98001-1605



(800) 683-8876      [packardwoodworks.com](http://packardwoodworks.com)

**Treeline**  
1221 East 1120 South  
Provo, UT 84606    (800)598-2743  
<http://www.treelineusa.com>

**Klingspor's Woodworking**  
P.O. Box 3737    Hickory, NC 28603-3737  
(800)228-0000



**D-WAY TOOLS**

[www.d-waytools.com](http://www.d-waytools.com)      360-432-9509



**MORE WOODTURNING**

[www.morewoodturning.net](http://www.morewoodturning.net)

**GD Design, LLLC**  
Custom Tool and Machining  
Jerry Little  
296-242-0337      [solidaxle@comcast.net](mailto:solidaxle@comcast.net)

**Woodline USA**  
1-800-472-6950  
Use code SPSWT at checkout

**Beginning and advanced woodturning classes.**  
Call Ed Quesnell at 206-406-5766,  
Tacoma, WA.

**Tropical Exotic Hardwoods  
Of Latin America**  
Mitch Talcove (760) 434-3030



Seattle (206) 767-6394    <http://woodcraft.com>



Joan & John Schmit      253-891-9413



(800) 547-5461

**CROSSCUT  
HARDWOODS**  
Seattle (206) 623-0334



DJ & Judi Brown  
(253) 302-5566  
**Laser Engraving**

**Woodturning classes – Satisfaction guaranteed.**  
Call Larry Miller 360-412-1583,  
Olympia, Washington



**ToolsbyCrabtree**  
<http://www.toolsbycrabtree.com/>      253- 273-2147

In order to receive club discounts from some of our mail order vendors we are required to provide them with an up-to-date membership list. This is so to verify that you are a member in good standing with the club and therefore entitled to the discount they provide us. If you would prefer not to be included on the list please email Stan Gardner [Stangard@comcast.net](mailto:Stangard@comcast.net).