



Chips & Shavings

SOUTH PUGET SOUND
WOODTURNERS
SPSW

Sept 17, 2012

September - Tones Briggs



This is the meeting you have been waiting for. Tones will join us to demonstrate the art of turning Christmas Ornaments. Most of you have probably seen examples of Tones' Christmas Ornaments, the fine details, the exquisite finials. Tones is truly an artist. He will share with us some of the secrets he has learned over years of turning ornaments. And while Tones is an accomplished turner of bowls, boxes, platters, and hollow forms, you would be amazed if you could see the quantities of Christmas Ornaments he has turned. You would be amazed that he actually has time for any other types of turnings.

Show up early, this should be a very well attended event.

Editor's note: We have had some problems with delivery of the newsletter. If you know of any members who are not receiving the newsletter, please let me know at tappsturner@comcast.net.

Also, there are more pictures than usual in this newsletter. If downloading takes longer than usual please let me know and I will try and correct it in future newsletters.

Voting for AAW Board of Directors

Members are encouraged to vote for the 2013 Board of Directors. Please vote either (1) electronically or (2) by paper ballot & snail mail, not by both methods, obviously. The vote will be audited to ensure accuracy. Members may vote for 1, 2, or 3 of the 6 candidates. We encourage you to participate in the voting process and hope that you take the time to help make this election turnout significant.

Electronically. Beginning August 1, sign in to the members' area to get the link for voting online. Deadline ... no later than midnight Central Standard Time, October 19, 2012.

Paper ballot and snail mail ... included with the August issue of the journal, along with a self-addressed envelope. Please fill out the ballot and mail it to the AAW Auditor, Harrington Langer, Harrington Langer & Associates, 563 Phalen Boulevard, Saint Paul MN 55130. Deadline ... this ORIGINAL paper ballot must be received no later than October 19, 2012, so mail early. Photocopies will not be accepted.

Bios of the candidates can be found on the AAW website.

While our club should not be involved in endorsing any candidate, please note that Larry Miller is one of the candidates! (ed.)



Contents:

Cover & SPSW Contacts	Pg. 1
President's Letter	Pg. 2
SPSW Calendar	Pg. 3
August Meeting Pictures	Pg. 4
Aug Show & Tell	Pg. 5&6
2012 Membership App	Pg. 7
Mentor Contacts	Pg. 8
Announcements	Pg. 8
Classifieds	Pg. 9
Club Supplies	Pg. 10
Vendors	Pg. 11

SPSW Contacts:

President: Dan Stromstad
(253) 851-7895
harboroptical@harbornet.com

V. President:

Treasurer: Les Johnson
(253) 896-0650
Grandpasturn@comcast.net

Membership: Jarred Hoffpauir
(206) 817-8252
Jarredh@gmail.com

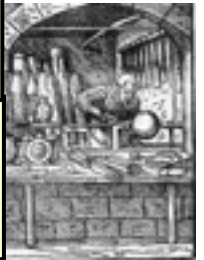
Editor: Bill Wood
(253) 891-2887
Tappsturner@comcast.net

Sawdust Sessions:
Jim Cotter (Coordinator)
(206) 954-9548
cotterjimmy@hotmail.com

Program Director:

Industry Coordinator:
Andy Firpo
(206) 362-1314
Drewdog@drewdog.com

Secretary: Tim Ramsaur
(253) 841-4663
Rgroup5@hotmail.com



Letter from the President



Wow, another month has flown by. It's September already and Christmas is just around the corner. Guess what, Tones Briggs is here to save the day. He is our hero. He will prepare us to be able to create wonderful Christmas gifts for our families and even to sell for others to give. His wonderful manner of teaching will help us to learn effectively and be prepared to accomplish these beautiful ornaments.

The spirit of giving is a wonderful thing and this brings me to another topic. Last month Beth, our wonderful caterer for our meetings, took in \$16.00 in donations. This does not cover much of her expenses and we need to be more loving members in our care for her needs just like she is amply taking care of our needs.

Some of you new members may not be aware of the fact that our supplies that are sold in the back of the meeting room are priced to save us lots of money. We even sell at our price to some of the local suppliers. That means that if you are not purchasing your supplies from our club you are probably wasting money.

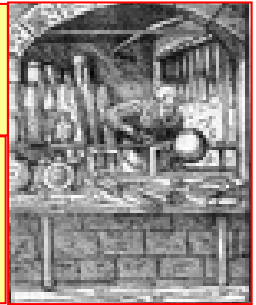
Our government in non action has not responded to our application for 501C3 status. However, I expect that to happen any day now. We will probably be asked to make some minor adjustments in our application or bylaws and then all will be well. We are not worried regarding this matter. We are looking forward to having this status confirmed.

With this in mind we are beginning to form a committee to plan for youth training beginning sometime next year, if all goes well. We need one leader and some helpers. If you are inspired to work with young folks please step forward to help out.

We are also in need of help on the board of directors. Many hands make light work. Our club needs more hands so that the current folks do not burn out. It is important that several folks step up and offer a helping hand. This is probably the largest club in the State of Washington and one of the largest in the U.S. We want to be sure it is the best source of innovation, motivation and teaching available to the local woodturning community.

Looking forward to seeing you this Thursday for another great meeting. Remember that we have a sawdust session on Saturday. Bring tools, wet wood and lunch for a great day of turning and learning.

Dan



SPSW 2012 Event Calendar

January 2012

19th - Membership Mtg
Stephen Hatcher
21st - **Stephen Hatcher**
two sessions
31st - Board Mtg
Les Johnson's

February 2012

16th - Membership Mtg
Carol Zandell
18th - Sawdust Session
28th - Board Mtg
Les Johnson's

March 2012

15th - Membership Mtg
Mini Symposium
17th - Sawdust Session
27th - Board Mtg
Les Johnson's
29th - **David Belser** All
Day Demo

April 2012

19th - Membership Mtg
John Beaver
20th - **John Beaver** All
Day Demo
21st - Sawdust Session
24th - Board Mtg
Les Johnson's

May 2012

17th - Membership Mtg
Panel Discussion
29th - Board Mtg
Les Johnson's

June 2012

21st - Membership Mtg
Mini Symposium
23rd - Sawdust Session
1/3/12 - Board Mtg
Les Johnson's
8th-10th - 26th Annual
AAW Symposium -
San Jose, CA

July 2012

19th - Membership Mtg
Eric Lofstrom
22nd - **Annual Picnic** -
31st - Board Mtg
Les Johnson's

No Sawdust Session in July

August 2012

16th - Membership Mtg
Larry Miller
18th - Sawdust Session
21st - Board Mtg
Les Johnson's

September 2012

20th - Membership Mtg
Tones Briggs
22nd - Sawdust Session
25th - Board Mtg
Les Johnson's

October 2012

18th - Membership Mtg
Jack Wayne
20th - Sawdust Session
30th - Board Mtg
Les Johnson's

November 2012

15th - Membership Mtg
John Schafer
17th - Sawdust Session
25th - Board Mtg
Les Johnson's

December 2012

20th - **Holiday Mtg**
22nd - Sawdust Session
TBD - Board Mtg
Les Johnson's

Upcoming national & international events courtesy of Fred Holder and More Woodturning

This Month at a Glance

- Membership Mtg. - Sep 20th (Thur.) 6:00 - 9:15 pm at Fife Senior Center
- Sawdust Session - Sep 22nd
- Board Mtg. - Sep 25th (Tue.) 7:00 - 8:30 pm at Les Johnson's, members welcome (RSVP to Dan Stromstad)



August Show & Tell

Photos by Bob Sievers

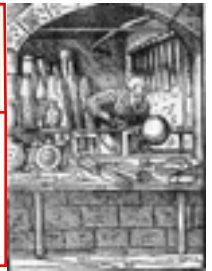




August Meeting - Larry Miller

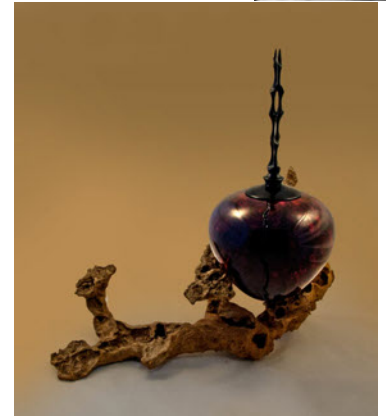
(Pictures courtesy of Fred Abeles)





August Show & Tell

Photos by Photos by Bob Sievers





South Puget Sound Woodturners (SPSW)
Membership Application

Name _____

Address _____

City _____ State _____ ZIP Code _____

Telephone No. _____

Email Address _____

How do you want to receive the newsletter? By: _____email _____US Mail

How long have you been turning? _____ AAW Member? _____

Woodturning interests: Spindle turning _____ Bowls _____ Vases _____

Segmented turning _____ Tool making _____

Tool sharpening _____ Other _____

Membership dues for South Puget Sound Woodturners are \$30.00 annually. Please make check payable to South Puget Sound Woodturners (or **SPSW**) and mail with this form to:

South Puget Sound Woodturners
P.O. Box 1792
Milton, WA
98354



Announcements

Are you a new member or visiting our club for the first time?

We are glad you are here and want to welcome you to our general membership meeting. **Please introduce yourself to an officer or mentor so we can welcome you.**

Need help with a splintering question?

Contact one of our "MENTORS". These club members have stepped up and would like to use their knowledge and expertise to help other turners with their questions. If these turners aren't able to answer your question, they will do their best to help you find a solution.

SPSW Mentors

- **Ted Bartholomew**
(253) 779-0819
- **Jim Cotter**
(206) 954-9548
- **Paul Crabtree**
(253) 273-2147
- **Hal Johnson**
(425) 788-2221
- **Eric Lofstrom**
(253)-320-4788
- **Pat McCart**
(253) 370-8986
- **John Moe**
(425) 643-4522
- **Dave Schweitzer**
(360) 432-9509
- **Bob Sievers**
(360) 897-8427
- **Jack Wayne**
(425)488-9561

- **SEATTLE AAW MEMBERSHIP MEETING** – 2nd Thursday of each month, VFW Hall, 4330 148th Ave NE, Redmond, WA 98052
- **OLYMPIA AAW MEMBERSHIP MEETING** – 4th Thursday of each month, Thurston County Fairgrounds
- **Wooden Laser Engraved Name Tags** are now available. The cost is \$10. To order a name tag please see Les Johnson at our supplies table at the monthly meeting.
- The South Puget Sound Woodturners now has a club policy for harvesting wood as a club function. Please go to our website <http://www.SPSWoodturners.org> for details.

MORE WOODTURNING

The magazine for turners. Published 10 times a year by Fred Holder. One yr: \$35.00; Two yrs: \$70.00; Three yrs \$105.00. Electronic version \$25/yr. delivered from More Woodturning online at: www.morewoodturning.net Lots of great information for your browsing pleasure. More Woodturning PO Box 2168 Snohomish WA 98291-2168 Phone: 360-668-0976 email: fred@morewoodturning.net

SPSW Library Usage Deposit

Due to the large number of items missing from our library, a decision was made at the January 31, 2012 Board of Directors meeting to require a \$5.00 deposit to checkout items from the library. The \$5.00 will be returned when the item is checked back in.



Classified Ads

Would you like to place an ad? Contact Bill Wood at (253) 891-2887 or tappsturner@comcast.net

2012 SPSW Membership: \$30 for single / family membership (only one card issued per \$30). Contact Jerred Hoffpauir at the general membership meeting or contact our treasurer, Les Johnson at (253) 896-0650 or grandpasturn@comcast.net or fill out the application in this newsletter and send a check to our P.O. Box.

WOODWORKING TOOLS FOR SALE

- Delta 3 hp 220v Unisaw, 52" Biesemeyer fence, Excalibur over arm blade guard with 4" dust port, Biesemeyer riving knife, HTC 1038U out feed roller table.
- Delta 12½" planer with stand and Jet 1½ hp dust collector.
- Craftsman 6" jointer with legs.
- Craftsman 10" radial arm saw.
- Rockler router table top with cabinet, Jessem router lift and Bosch 1½ hp router.
- Dremel 2 speed scroll saw with stand.
- Porter Cable OmniJig 24" Dovetail jig #7124
- Delta mortiser machine.
- Shopsmith over-arm router table with Bosch 1½ hp router,

I am downsizing my shop.
Barry Hoskins 360/761-8045

Delta " 46-111, 46-150 14/11" wood lathe. Phone No. 206-842-5034

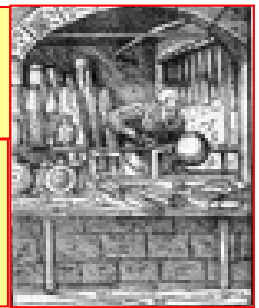
Delta 46-150 wood lathe Make offer, Greg Bedinger 206-251-5386

Jet Dust Collector DC 650 RC Along with Picture glass, glass cutter , matting and matting cutter, for picture frames. Make Offer Laura Berlin 253-517-7666

Ridgid Table Saw Model TS 2424 350.00 Dewalt 12 1/2 Heavy Duty Portable Thickness Planer SP 6418 250.00
Or Offer Larry Rydberg 2532491779

Ted Bartholomew Built Lathe - 40" bed w/ 12" extension. Base has 500 lb ballast tank. 2HP motor w/ electronic control, forward/reverse and belt drive. 1-1/8 headstock. 2 face plates, 3 tool rests (10" and two 20"). Turn off either end of lathe. Gun-barrel tool (made by Ted). Many different bits fit this tool. This has been a wonderful lathe for me and has given me many hours of use. Kept in prime condition. Never abused.

Asking \$2000 or best offer. **Ron Shepherd (360) 301-5332**



Club supplies

The following items are available for purchase at the monthly meetings. Proceeds earned from the sale of these items go back into the club.

CODE	DESCRIPTION		PRICE
	GLUE		
HS-4	Hot Stuff (Thin) RED	2 oz	9.00
HST-4	Super "T" (gap) YEL	2oz	9.00
HS-4T	Special "T" (thick) GRN	2oz	10.00
	ACCELERATOR		
QA-6	NCF Quick Can	6oz	11.00
	COMPANION PRODUCTS		
US-1	Ultra Solvent	2oz	8.00
HT-600	Replacement Glue Caps		1.00
PT-100	Pro Tips	4	1.00
301	Extend Tips	3	1.00
302	Extend Tips	3	1.00
303	Long Tips	1	1.00
305	Tubing		1.00
322	CA Applicator Fine		1.00
	OTHER		
IND	Index Wheels		20.00
SEL	Sealer 1 gal	1 gal.	18.00
Finish	Walnut Oil	1 qt.	12.00
Finish	Friction Polish	1 qt.	14.00
Lube	DynaGlide Tool Lube		12.00
	SANDING		
Micro M	3"X6" Sheets	6	13.00
Micro M	3"X6" Sheets	12	24.00
DISCS	2" Discs grits 80 - 400	10	3.00
	3" Discs grits 80 - 400	10	4.00
SHEETS.	Sandpaper grits 80 - 1000	5	2.00
SHEETS.	Sand Cloth grits 80 - 220	1	1.00



Our Sponsors

Tukwila 206-2474-9161



ROCKLER®
WOODWORKING AND HARDWARE

CRAFT SUPPLIES USA
— THE WOODTURNERS CATALOG —

(800) 551-8876
<http://www.woodturnerscatalog.com>

Equipment Sales & Surplus
1801 West Valley Hwy N
Auburn, WA 98001-1605



(800) 683-8876 packardwoodworks.com

Treeline
1221 East 1120 South
Provo, UT 84606 (800)598-2743
<http://www.treelineusa.com>

Klingspor's Woodworking
P.O. Box 3737 Hickory, NC 28603-3737
(800)228-0000



D-WAY TOOLS

www.d-waytools.com 360-432-9509



MORE WOODTURNING

www.morewoodturning.net

GD Design, LLLC
Custom Tool and Machining
Jerry Little
296-242-0337 solidaxle@comcast.net

Woodline USA
1-800-472-6950
Use code SPSWT at checkout

Beginning and advanced woodturning classes.
Call Ed Quesnell at 206-406-5766,
Tacoma, WA.

**Tropical Exotic Hardwoods
Of Latin America**
Mitch Talcove (760) 434-3030



Seattle (206) 767-6394 <http://woodcraft.com>



Joan & John Schmit 253-891-9413



(800) 547-5461

**CROSSCUT
HARDWOODS**
Seattle (206) 623-0334



DJ & Judi Brown
(253) 301-2075
Laser Engraving

Woodturning classes – Satisfaction guaranteed.
Call Larry Miller 360-412-1583,
Olympia, Washington



ToolsbyCrabtree
<http://www.toolsbycrabtree.com/> 253- 273-2147

In order to receive club discounts from some of our mail order vendors we are required to provide them with an up-to-date membership list. This is so to verify that you are a member in good standing with the club and therefore entitled to the discount they provide us. If you would prefer not to be included on the list please email Jarred Hoffpaur jarredh@gmail.com.